

**WITH SOLAX
YOU'VE GOT THE POWER**

SMART SOLAR & ENERGY SOLUTIONS




Scan for digital version




Follow us on social media

SOLAX POWER NETWORK TECHNOLOGY (ZHEJIANG) CO., LTD.

Global: +86 571-56260008

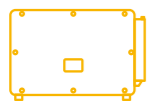
 www.solaxpower.com

 info@solaxpower.com

SOLAX
POWER

WE ARE SOLAX

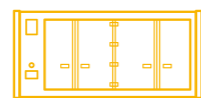
Established in 2012, SolaX Power is a publicly listed global leader specializing in solar energy storage and smart energy technologies. Offering a comprehensive product portfolio including inverters, batteries, energy storage systems, EV chargers, heat pumps, and integrated smart energy solutions, SolaX serves diverse application scenarios across residential, commercial and industrial, and utility scale projects. With a strong commitment to innovation, driven by an R&D team representing 30% of its workforce, SolaX continues to deliver market-leading solutions worldwide. Dedicated to sustainability and backed by extensive global partnerships, SolaX helps customers in over 110 countries achieve their energy transition goals and significantly reduce carbon emissions.



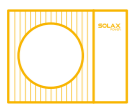
Inverter



Battery



Energy storage system



Heat pump



EV charger



Smart energy solution

The Leading Solar Energy Storage Solution Provider

STOCK CODE: 688717.SH

3,000+

Global Employees

1,100+

Global Certifications

1,000+

R&D Personnel

110+

Shipping Countries

1,500,000

Running systems



red dot



TÜVRheinland®
Precisely Right.



EUPD(2019-2025)

INNOVATION AT OUR CORE

300+ GLOBAL PATENTS

First Hybrid Inverter

2013

R&D Centers

04

R&D Staff

1,000+

R&D Staff Ratio

30%+

ROBUST QUALITY MANAGEMENT SYSTEM

Foundational Management Systems



ISO 9001 – Quality Management System



ISO 14001 – Environmental Management System



ISO 45001 – Occupational Health and Safety Management System

Information Security, Business Continuity & Sustainability Governance



ISO 27001 – Information Security Management System



ISO 22301 – Business Continuity Management System

Green Development and Environmental Responsibility



ISO 50001 – Energy Management System



ISO 14064 – Greenhouse Gas Emissions and Carbon Footprint Management



EPD – Environmental Product Declaration

Corporate Social Responsibility



SA8000 – Social Accountability Management System



ISO 56005 – Innovation Management: Tools and Methods for Intellectual Property Management



AEO Certification – Authorized Economic Operator

Intellectual Property Protection and Innovation Management

Supply Chain Security and Trade Facilitation

SOLAX POWER SMART FACTORY

- LEANIZATION
- DIGITALIZATION
- AUTOMATION

240,000

sqm Manufacturing Land

20GW

Inverter Annual Capacity

10GWh

Battery Annual Capacity

275

Large-scale
Manufacturing Equipments

**PARTNER OF
BORUSSIA DORTMUND**



SOLAX BRAND AMBASSADOR

Highly awarded.
Max can Relax. It's a SolaX.



Max Gawn

Max Gawn
Melbourne Football Club Captain

CONTENTS

11

PRODUCT PORTFOLIO

Microinverter	11-16
Residential PV Inverter	17-30
C&I PV Inverter	31-38
Utility PV Inverter	39-54
Smart Energy Management	55-68
Smart EV Charger	69-76
Heat Pump	77-84

85

SUCCESS STORIES

Success Stories	85-94
-----------------	-------

SOLAX



SMART SOLAR ENERGY SOLUTIONS
Microinverter

Microinverter



X1-Micro 2 in 1 G2

800 W / 1000 W / 1200 W

High Efficiency

- Max. 1200 VA output power
- Max. 18 A DC input current
- Two MPPT channels
- Max. efficiency up to 97%

Assured Safety

- Rapid shutdown function
- Safety protection relay integrated
- IP67 ingress protection

Intelligent Design

- Reactive power regulation (0.8 leading...0.8 lagging)
- Built-in WiFi communication
- Support zero export function
- Module level monitoring and control
- Remote firmware upgrades, parameter configuration, and fault analysis

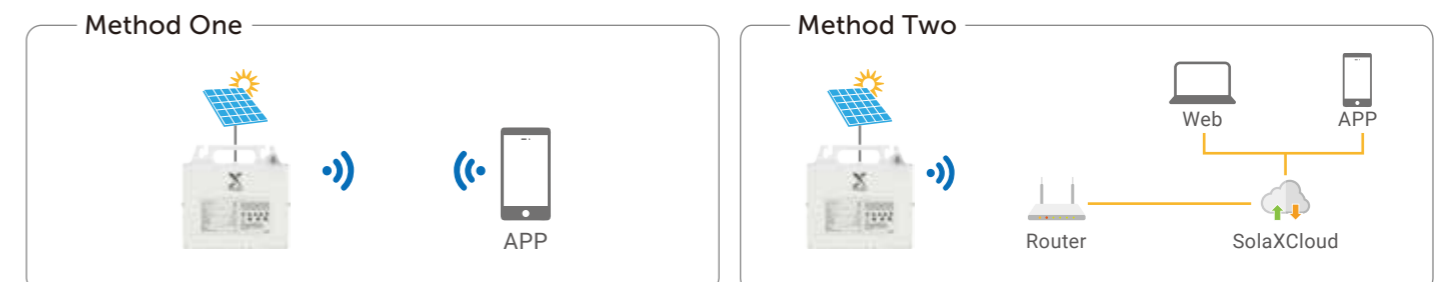
Flexible Adaptability

- Plug and play
- Supporting AC coupling solution
- Supporting 1-phase microinverter integration into 3-phase power grid

	X1-Micro 800 G2	X1-Micro 1000 G2	X1-Micro 1200 G2
PV INPUT			
Commonly used module power per input	320 ~ 540+ W	400 ~ 670+ W	400 ~ 670+ W
Max. PV input voltage	60 V		
MPPT voltage range	22 - 60 V		
Start-up voltage	20 V		
Max. PV input current	2 x 14 A	2 x 16 A	2 x 18 A
Max. input short circuit current Isc	2 x 20 A	2 x 20 A	2 x 20 A
No. of MPP trackers	2		
Strings per MPP tracker	1		
AC OUTPUT			
Rated AC output power	800 VA	1000 VA	1200 VA
Max. continuous output power	800 VA	1000 VA	1200 VA
Max. continuous output current	3.64 A @220 V 3.48 A @230 V 3.34 A @240 V	4.55 A @220 V 4.35 A @230 V 4.17 A @240 V	5.46 A @220 V 5.22 A @230 V 5.00 A @240 V
Rated grid voltage	220 / 230 / 240 V		
Rated AC voltage range	180 ~ 276 V		
Rated AC frequency	50 Hz / 60 Hz		
AC frequency / range	50 ± 5 Hz / 60 ± 5 Hz		
Max. units per 10AWG branch*	7 @220 V 8 @230 V 8 @240 V	6 @220 V 6 @230 V 6 @240 V	5 @220 V 5 @230 V 5 @240 V
Max. units per 12AWG branch*	6 @220 V 6 @230 V 6 @240 V	4 @220 V 5 @230 V 5 @240 V	4 @220 V 4 @230 V 4 @240 V
Power factor range	~ 1 (0.8 leading...0.8 lagging)		
THDi (rated power)	< 3%		
EFFICIENCY			
Max. efficiency	97.00%		
MPPT efficiency	99.90%		
Power consumption (night)	< 40 mW		
STANDARD			
Safety	IEC 62109-1/-2, IEC 63027		
EMC	IEC 62920:2017, IEC 61000-6-1-2-3-4, IEC 61000-3-2, IEC 61000-3-3, EN 301489, EN 55011		
Certifications	IEC 61727, IEC 62116, EN 50549-1:2019, G98, VDE 4105, C10/11		
ENVIRONMENT LIMIT			
Ingress protection	IP67		
Operating temperature range	-40 ~ 65°C		
Relative humidity	0 ~ 100% RH (condensing)		
GENERAL			
Dimensions (W x H x D)	234 x 191 x 41 mm		
Weight	3.3 kg		
Cooling concept	Natural cooling		
Communication	WiFi		
Monitoring	SolaXCloud		

* Refer to local requirements for exact number of microinverters per branch

Communication Diagram



Microinverter



X1-Micro 4 in 1 G2

1875 W / 2000 W / 2250 W / 2400 W / 2500 W

High Efficiency

- Max. 2500 VA output power
- Max. 18 A DC input current
- Four MPPT channels
- Max. efficiency up to 97%

Assured Safety

- Rapid shutdown function
- Safety protection relay integrated
- IP67 ingress protection

Intelligent Design

- Reactive power regulation (0.8 leading...0.8 lagging)
- Built-in WiFi communication
- Support zero export function
- Module level monitoring and control
- Remote firmware upgrades, parameter configuration, and fault analysis

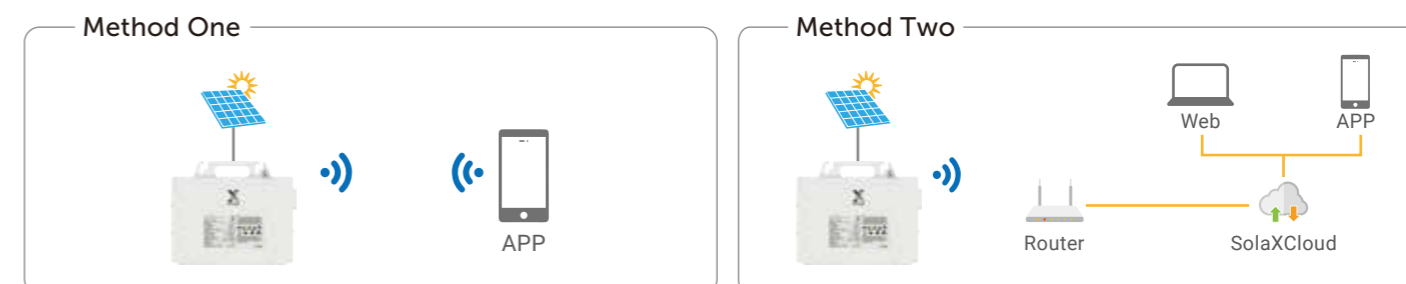
Flexible Adaptability

- Plug and play
- Supporting AC coupling solution
- Supporting 1-phase microinverter integration into 3-phase power grid

	X1-Micro 1875 G2	X1-Micro 2000 G2	X1-Micro 2250 G2	X1-Micro 2400 G2	X1-Micro 2500 G2
PV INPUT					
Commonly used module power per input	360 ~ 600+ W	400 ~ 670+ W	450 ~ 700+ W	500 ~ 750+ W	500 ~ 750+ W
Max. PV input voltage	60 V				
MPPT voltage range	22 ~ 60 V				
Start-up voltage	20 V				
Max. PV input current	4 × 17 A	4 × 17 A	4 × 18 A	4 × 18 A	4 × 18 A
Max. input short circuit current	4 × 20 A	4 × 20 A	4 × 25 A	4 × 25 A	4 × 25 A
No. of MPP trackers	4				
Strings per MPP tracker	1				
AC OUTPUT					
Rated AC output power	1875 VA	2000 VA	2250 VA	2400 VA	2500 VA
Max. continuous output power	1875 VA	2000 VA	2250 VA	2400 VA	2500 VA
Max. continuous output current	8.53 A @220 V 8.16 A @230 V 7.82 A @240 V	9.10 A @220 V 8.70 A @230 V 8.34 A @240 V	10.20 A @220V 9.79 A @230V 9.38 A @240V	10.91 A @220V 10.44 A @230V 10.00 A @240V	11.37 A @220V 10.67 A @230V 10.42 A @240V
Rated grid voltage	220 / 230 / 240 V				
Rated AC voltage range	180 ~ 276 V				
Rated AC frequency	50 Hz / 60 Hz				
AC frequency / range	50 ± 5 Hz / 60 ± 5 Hz				
Max. units per 10AWG branch*	3@220 V 3@230 V 3@240 V	3@220 V 3@230 V 3@240 V	3@220 V 3@230 V 3@240 V	2@220 V 2@230 V 2@240 V	2@220 V 2@230 V 2@240 V
Max. units per 12AWG branch*	2@220 V 2@230 V 2@240 V	2@220 V 2@230 V 2@240 V	2@220 V 2@230 V 2@240 V	2@220 V 2@230 V 2@240 V	2@220 V 2@230 V 2@240 V
Power factor range	~ 1 (0.8 leading...0.8 lagging)				
THDi (rated power)	< 3%				
EFFICIENCY					
Max. efficiency	97.00%				
MPPT efficiency	99.90%				
Power consumption (night)	< 40 mW				
STANDARD					
Safety	IEC 62109				
EMC	IEC 61000, EN 62920, EN 301489, EN 55011				
Certifications	IEC 61727, IEC 62116, EN 50549, VDE 4105, UNE 217001, UNE 217002, RD 244/647, NTS Version 2.1 TYPE A, INMETRO, PEA/MEA				
ENVIRONMENT LIMIT					
Ingress protection	IP67				
Operating temperature range	-40 ~ 65°C				
Relative humidity	0 ~ 100% RH (condensing)				
GENERAL					
Dimensions (W x H x D)	317 × 225 × 41 mm				
Weight	5.2 kg				
Cooling concept	Natural cooling				
Communication	WiFi				
Monitoring	SolaXCloud				

* Refer to local requirements for exact number of microinverters per branch

Communication Diagram





SMART SOLAR ENERGY SOLUTIONS
Residential PV Inverter

Single-phase Residential On-grid Inverter



X1-MINI G4

0.6kW / 0.7kW / 0.8kW / 1.1kW / 1.5kW
2.0kW / 2.5kW / 3.0kW / 3.3kW

High Efficiency

- 200% PV oversizing and 16A input to support high-power panels
- Ultra-Wide MPPT voltage range
- Built-in global MPP scan

Intelligent Design

- 10s data refresh on SolaXCloud
- IV curve scan

Assured Safety

- Type II SPD on AC & DC side
- Ready for rapid shutdown function
- AFCI support (optional)
- IP66 ingress protection

Flexible Adaptability

- Built-in export power control function
- Supports parallel operation for up to 5 inverters, no external EMS required
- Smart loads management (e.g. heat pump, smart EV charger)

X1-MINI-0.6K-G4 X1-MINI-0.7K-G4 X1-MINI-0.8K-G4 X1-MINI-1.1K-G4 X1-MINI-1.5K-G4 X1-MINI-2.0K-G4 X1-MINI-2.5K-G4 X1-MINI-3.0K-G4 X1-MINI-3.3K-G4

PV INPUT									
Max. recommended PV array power	1.2 kWp	1.4 kWp	1.6 kWp	2.2 kWp	3 kWp	4 kWp	5 kWp	6 kWp	6.6 kWp
Max. PV input voltage ^①	450 V						550 V		
Rated PV input voltage	360 V								
Operation voltage range	35 ~ 450 V						35 ~ 550 V		
MPPT voltage range ^②	40 ~ 450 V						40 ~ 550 V		
Start up voltage	50 V								
No. of MPPT trackers / strings per MPPT tracker	1 / 1								
Max. input current per MPPT	16 A								
Max. input short circuit current per MPPT	22 A								
AC OUTPUT									
Rated output power	600 W	700 W	800 W	1100 W	1500 W	2000 W	2500 W	3000 W	3300 W
Rated output current ^③	2.6 A	3.1 A	3.5 A	4.8 A	6.5 A	8.7 A	10.9 A	13.1 A	14.4 A
Max. output apparent power	600 VA	770 VA	800 VA	1210 VA	1650 VA	2200 VA	2750 VA	3300 VA	3300 VA
Max. output continuous current ^③	3.0 A	3.5 A	3.7 A	5.5 A	7.5 A	10.0 A	12.5 A	15.0 A	15.0 A
Rated AC voltage	1 / N / PE, 220 / 230 / 240 V								
Rated AC frequency	50 Hz / 60 Hz								
AC frequency range ^④	50 ± 5 Hz / 60 ± 5 Hz								
Adjustable power factor range	~ 1 (0.8 lagging to 0.8 leading)								
THDi (rated power)	< 3%								
EFFICIENCY									
Max. efficiency	98.0%								
European efficiency	96.0%						97.0%		
ENVIRONMENT LIMIT									
Ingress protection	IP66								
Operation temperature range	-25 ~ 60°C (> 45°C derating)								
Max. operation altitude	4000 m								
Relative humidity	0 ~ 100% RH (condensing)								
Overvoltage category	Mains: III, PV: II								
GENERAL									
Dimensions (W × H × D)	290 × 206 × 120 mm								
Net weight	5.2 kg						5.5 kg		
Cooling concept	Natural cooling								
Communication interfaces	RS 485, DRM, meter / CT (optional)								
Power consumption (night)	< 1 W								
Topology	Non-isolated								
Certifications	EN / IEC62109-1/ 2, IEC61727, EN50549, G98 G99, AS 4777.2, VDE4105, CEI 0-21, VFR								
AC auxiliary power supply (APS)	Optional								
PROTECTION									
Protection	Over / under voltage protection, DC isolation protection, Grid monitoring, DC injection monitoring, DC reverse-polarity protection, Back feed current monitoring, Residual current detection, Over temperature protection, Monitoring ground fault protection, String fault detection, AC overcurrent protection, AC short-circuit protection								
Active anti-islanding protection	Frequency shift								
Surge protection (DC / AC)	DC: Type II, AC: Type II								
Arc-fault circuit interrupter (AFCI)	Optional								

① The maximum input voltage is the upper limit of the DC voltage. Any higher input DC voltage would probably damage the inverter
 ② Input voltage exceeding the MPPT voltage range may trigger inverter protection
 ③ The two data refer to different grid voltage 220V/230V
 ④ The AC frequency range may vary from different country codes

Single-phase Residential On-grid Inverter



X1-MINI G4 PLUS

5kW / 6kW

High Efficiency

- 20A input to support high-power panels
- Extremely high power density
- Ultra-wide MPPT voltage range

Assured Safety

- Type II SPD on AC & DC side
- IP66 ingress protection

Intelligent Design

- Global MPP tracking with shade optimization
- IV curve scan

Flexible Adaptability

- Supporting parallel operation for up to 5 inverters, no external EMS required
- Maintains full power up to 50°C
- Built-in export control function

* Feature to be upgraded in the future

*V1.1. Information may be subject to modify without notice.650.00092.00

	X1-MINI-5K-G4-P	X1-MINI-6K-G4-P
	PV INPUT	
Max. recommended PV array power	7.5 kWp	7.8 kWp
Max. PV input voltage ^①	600 V	
Rated PV input voltage	360 V	
Operating voltage range	40 ~ 550 V	
MPPT voltage range ^②	40 ~ 550 V	
Start-up voltage	50 V	
No. of MPP trackers / strings per MPP tracker	1 / 1	
Max. input current per MPPT	20 A	
Max. input short circuit current per MPPT	25 A	
	AC OUTPUT	
Rated output power	5 kW	6 kW
Rated output current	21.7 A	26.1 A
Max. output apparent power	5.5 kVA	6 kVA
Max. output continuous current	23.9 A	26.1 A
Rated AC voltage	1 / N / PE, 230 V	
Rated AC frequency	50 Hz	
AC frequency range ^③	50 ± 5 Hz	
Adjustable power factor range	~ 1 (0.8 lagging to 0.8 leading)	
THDi (rated power)	< 3%	
	EFFICIENCY	
Max. efficiency	98.0%	
European efficiency	97.0%	
	ENVIRONMENT LIMIT	
Ingress protection	IP66	
Operating temperature range	-25 ~ 60°C	
Max. operating altitude	4000 m	
Relative humidity	0 ~ 100% (condensing)	
Overvoltage category	Mains: III, PV: II	
	GENERAL	
Dimensions (W × H × D)	330 × 235 × 145 mm	
Net weight	7.5 kg	
Cooling concept	Natural cooling	
Communication interfaces	RS485, optional: Pocket WiFi / 4G, CT / meter	
Power consumption (night)	< 1 W	
Topology	Non-isolated	
Certifications	IEC61727, EN/IEC62109-1/2	
	PROTECTION	
Protections	Over / under voltage protection, DC isolation protection, Grid monitoring, DC injection monitoring, Back feed current monitoring, Residual current detection, Over temperature protection, AC overcurrent protection, AC short-circuit protection	
Active anti-islanding method	Frequency shift	
Surge protection (DC / AC)	DC: Type II, AC: Type II	

① The maximum input voltage is the upper limit of the DC voltage. Any higher input DC voltage would probably damage inverter

② Input voltage exceeding the MPPT voltage range may triggers inverter protection

③ The AC frequency range may vary from different country codes

Single-phase Residential On-grid Inverter



X1-BOOST G4

2.5kW / 3.0kW / 3.3kW / 3.6kW
4.0kW / 4.2kW / 5.0kW / 6.0kW

High Efficiency

- 200% PV oversizing and 16A input to support high-power panels
- 50V start up voltage

Assured Safety

- Type II SPD on AC & DC side
- Ready for rapid shutdown function
- AFCI support (optional)

Intelligent Design

- 10s data refresh on SolaXCloud
- Easy configuration via WiFi & App
- IV curve scan

Flexible Adaptability

- Supports parallel operation for up to 5 inverters, no external EMS required
- Smart loads management (e.g. heat pump, smart EV charger)
- Built-in export power control function

X1-BOOST-2.5K-G4 X1-BOOST-3K-G4 X1-BOOST-3.3K-G4 X1-BOOST-3.6K-G4 X1-BOOST-4K-G4 X1-BOOST-4.2K-G4 X1-BOOST-5K-G4 X1-BOOST-6K-G4

PV INPUT								
Max. recommended PV array power	6.0 kWp	6.0 kWp	6.6 kWp	7.2 kWp	8.0 kWp	8.0 kWp	10.0 kWp	12.0 kWp
Max. PV input voltage ^①	600 V							
Rated PV input voltage	360 V							
Operation voltage range	35 ~ 600 V							
MPPT voltage range ^②	40 ~ 560 V							
Start up voltage	50 V							
No. of MPPT trackers / strings per MPPT tracker	2 / (1 / 1)							
Max. input current per MPPT	16 A / 16 A							
Max. input short circuit current per MPPT	22 A / 22 A							
AC OUTPUT								
Rated output power	2500 W	3000 W	3300 W	3680 W	4000 W	4200 W	5000 W ^③	6000 W
Rated output current	10.9 A	13.1 A	14.4 A	16.0 A	17.4 A ^④	18.3 A	21.7 A	26.1 A
Max. output apparent power	2750 VA	3300 VA	3630 VA	4048 VA ^⑤	4000 VA	4620 VA	5000 VA ^⑥	6000 VA
Max. output continuous current	12.0 A	14.4 A	15.8 A	17.6 A ^⑦	17.4 A ^⑧	20.1 A	21.7 A ^⑨	27.3 A
Rated AC voltage	1 / N / PE, 220 / 230 / 240 V							
Rated AC frequency	50 Hz / 60 Hz							
AC frequency range ^⑩	50 ± 5 Hz / 60 ± 5 Hz							
Adjustable power factor range	~ 1 (0.8 lagging to 0.8 leading)							
THDi (rated power)	< 3%							
EFFICIENCY								
Max. efficiency	98.0%							
European efficiency	97.0%							
ENVIRONMENT LIMIT								
Ingress protection	IP66							
Operation temperature range	-25 ~ 60°C							
Max. operation altitude	4000 m							
Relative humidity	0 ~ 100% RH (condensing)							
Overvoltage category	Mains: III, PV: II							
GENERAL								
Dimensions (W × H × D)	404 × 274 × 146 mm							
Net weight	11.0 kg						11.5 kg	
Cooling concept	Natural cooling							
Communication interfaces	RS 485, DRM, optional: meter, CT							
Power consumption (night)	< 3 W							
Topology	Non-isolated							
Certifications	IEC/EN 62109-1/-2, IEC61727, EN50549, G98/G99, AS 4777.2, VDE4105, CEI 0-21, VFR, PPDS, TOR							
AC auxiliary power supply (APS)	Optional							
PROTECTION								
Protection	Over / under voltage protection, DC isolation protection, DC reverse-polarity protection, Grid monitoring, DC injection monitoring, Back feed current monitoring, DC reverse-polarity protection							
Active anti-islanding protection	Frequency shift							
Surge protection (DC / AC)	DC: Type II, AC: Type II							
Arc-fault circuit interrupter (AFCI)	Optional							

① The maximum input voltage is the upper limit of the DC voltage. Any higher input DC voltage would probably damage the inverter
 ② Input voltage exceeding the MPPT voltage range may trigger inverter protection
 ③ 5000 W (4600 W for VDE4105, 4999 W for AS4777.2)
 ④ 17.4 A (16 A For G98) ⑤ 4048 VA (3680VA For G98/G99, TOR and PPDS) ⑥ 5000 VA (4600 VA for VDE4105, 4999 VA for AS4777.2)
 ⑦ 17.6 A (16 A For G98/G99, TOR and PPDS) ⑧ 17.4 A (16 A For G98) ⑨ 21.7 A (20 A for VDE4105)
 ⑩ The AC frequency range may vary from different country codes

Single-phase Residential On-grid Inverter



X1-SMART G2

5kW / 6kW / 7kW / 8kW
9kW / 10kW

High Efficiency

- 3 MPP trackers for multi-orientation
- Max. 20A PV input current
- 200% PV oversizing & 110% AC overloading
- Built-in global MPP scan

Assured Safety

- Type II SPD on AC & DC side
- Ready for rapid shutdown function
- AFCI support (optional)

Intelligent Design

- Plug-and-play communication terminal
- 10s data refresh on SolaXCloud
- IV curve scan

Flexible Adaptability

- Supports parallel operation for up to 5 inverters, no external EMS required
- Smart loads management (e.g. heat pump, smart EV charger)

	X1-SMT-5K-G2	X1-SMT-6K-G2	X1-SMT-7K-G2	X1-SMT-8K-G2	X1-SMT-9K-G2	X1-SMT-10K-G2
PV INPUT						
Max. recommended PV array power	10 kWp	12 kWp	14 kWp	16 kWp	18 kWp	20 kWp
Max. PV input voltage ^①	600 V					
Rated PV input voltage	360 V					
Operation voltage range	35 ~ 600 V					
MPPT voltage range ^②	40 ~ 560 V					
Start-up voltage	50 V					
No. of MPPT trackers / strings per MPPT tracker	3 / (1 / 1 / 1)					
Max. input current per MPPT	20 A / 20 A / 20 A					
Max. input short circuit current per MPPT	25 A / 25 A / 25 A					
AC OUTPUT						
Rated output power	4999 W	6000 W	7000 W	8000 W	9000 W	9999 W
Rated output current	21.8 A	26.1 A	30.5 A	34.8 A	39.2 A	43.5 A
Max. output apparent power	4999 VA	6600 VA	7700 VA	8800 VA	9900 VA	9999 VA
Max. output continuous current	22.8 A	30.0 A	35.0 A	40.0 A	45.0 A	45.5 A
Rated AC voltage	1 / N / PE, 220 / 230 / 240 V					
Rated AC frequency	50 Hz / 60 Hz					
AC frequency range ^③	50 ± 5 Hz / 60 ± 5 Hz					
Adjustable power factor range	~ 1 (0.8 lagging to 0.8 leading)					
THDi (rated power)	< 3%					
EFFICIENCY						
Max. efficiency	98.2%					
European efficiency	97.5%					
ENVIRONMENT LIMIT						
Ingress protection	IP66					
Operation temperature range	-25 ~ 60°C					
Max. operation altitude	4000 m					
Relative humidity	0 ~ 100% RH (condensing)					
Overvoltage category	Mains: III, PV: II					
GENERAL						
Dimensions (W × H × D)	515 × 370 × 170 mm					
Net weight	19.5 kg					
Cooling concept	Natural cooling					
Communication interfaces	RS485, DRM, CT, Meter, WiFi, LAN, 4G, WiFi+LAN, WiFi+4G					
Power consumption (night)	< 3 W					
Topology	Non-isolated					
Certifications	IEC/EN 62109-1/-2, AS 4777.2:2020, G99, INMETRO, IEC61727					
PROTECTION						
Protection	Over / under voltage protection, DC isolation protection, DC reverse-polarity protection, Grid monitoring, DC injection monitoring, Back feed current monitoring, Residual current detection, Anti-islanding protection, Over temperature protection, DC reverse-polarity protection					
Active anti-islanding protection	Frequency shift					
Surge protection (DC / AC)	DC: Type II, AC: Type II					
Arc-fault circuit interrupter (AFCI)	Optional					

① The maximum input voltage is the upper limit of the DC voltage. Any higher input DC voltage would probably damage the inverter

② Input voltage exceeding the MPPT voltage range may trigger inverter protection

③ The AC frequency range may vary from different country codes

Three-phase Residential On-grid Inverter



X3-MIC G2

3kW / 4kW / 5kW / 6kW
8kW / 10kW / 12kW / 15kW

High Efficiency

- Up to 98.3% efficiency
- 32A per MPP tracker
- 200% DC oversizing & 110% AC overloading output
- Built-in global MPP scan
- Low start-up voltage & ultra-wide MPPT range

Intelligent Design

- 24h monitoring (WiFi / LAN / 4G)
- Smart loads management (e.g. heat pump, smart EV charger)

Assured Safety

- Type II SPD on AC & DC side (optional)
- AFCI support (optional)
- IP66 ingress protection

Flexible Adaptability

- Built-in export power control function
- Ultra-high power density

	X3-MIC-3K-G2	X3-MIC-4K-G2	X3-MIC-5K-G2	X3-MIC-6K-G2	X3-MIC-8K-G2	X3-MIC-10K-G2	X3-MIC-12K-G2	X3-MIC-15K-G2
PV INPUT								
Max. recommended PV array power	6 kWp	8 kWp	10 kWp	12 kWp	16 kWp	20 kWp	24 kWp	30 kWp
Max. PV input voltage ^①	1000 V							
Rated PV input voltage	640 V							
Operation voltage range	100 ~ 985 V							
MPPT voltage range ^②	120 ~ 980 V							
Start-up voltage	150 V							
No. of MPP trackers / strings per MPP tracker	2 / (1 / 1)				2 / (1 / 1) ^③		2 / (2 / 1)	
Max. input current per MPPT	16 A / 16 A				16 A / 16 A ^③		32 A / 16 A	
Max. input short circuit current per MPPT	20 A / 20 A				20 A / 20 A ^③		40 A / 20 A	
AC OUTPUT								
Rated output power	3000 W	4000 W	5000 W	6000 W	8000 W	10000 W	12000 W	15000 W
Rated output current	4.6 A	6.1 A	7.6 A	9.1 A	12.2 A	15.2 A	18.2 A	22.7 A
Max. output apparent power	3300 VA	4400 VA	5500 VA	6600 VA	8800 VA	11000 VA	13200 VA	15000 VA
Max. output continuous current	4.8 A	6.4 A	8.0 A	9.6 A	12.8 A	16.0 A	19.1 A	22.7 A
Rated AC voltage	3 / N / PE, 220 / 380 V 3 / N / PE, 230 / 400 V							
Rated AC frequency	50 Hz / 60 Hz							
AC frequency range ^④	50 ± 5 Hz / 60 ± 5 Hz							
Adjustable power factor range	~ 1 (0.8 lagging to 0.8 leading)							
THDi (rated power)	< 3%							
EFFICIENCY								
Max. efficiency	98.3%							
European efficiency	97.8%							
ENVIRONMENT LIMIT								
Ingress protection	IP66							
Max. operation altitude	4000 m							
Relative humidity	0 ~ 100% RH (condensing)							
Overvoltage category	Mains: III / PV: II							
GENERAL								
Dimensions (W × H × D)	342 × 434 × 144.5 mm				342 × 434 × 156 mm			
Net weight	15.5 kg				17.0 kg		18.0 kg	
Cooling concept	Natural cooling				Smart air cooling			
Communication interfaces	RS485 / DRM, optional: meter							
Power consumption (night)	< 3 W							
Topology	Non-isolated							
Certifications	VDE4105, EN 50549, AS 4777.2, VDE4105, G98/G99, IEC 61727, IEC 62116, IEC 61683, IEC 60068, EN 50530, NB/T 32004 IEC/EN 62109-1, IEC/EN 62109-2							
PROTECTION								
Protections	Over / under voltage protection, DC isolation protection, DC reverse-polarity protection, Grid monitoring, DC injection monitoring, Back feed current monitoring, Residual current detection, Over temperature protection, AC overcurrent protection, AC short-circuit protection							
Active anti-islanding method	Frequency shift							
Surge protection (DC / AC)	Type II / Type II (optional)							
Arc-fault circuit interrupter (AFCI)	Optional							
AC auxiliary power supply (APS)	Optional							

① The maximum input voltage is the upper limit of the DC voltage. Any higher input DC voltage would probably damage the inverter
 ② Input voltage exceeding the MPPT voltage range may trigger inverter protection
 ③ Input 1 is optional with two strings (Max. input current: 32A, Max. short circuit current: 40A)
 ④ The AC frequency range may vary from different country codes

Three-phase Residential On-grid Inverter



X3-PRO G2

8kW / 10kW / 12kW / 15kW
17kW / 20kW / 25kW / 30kW

High Efficiency

- Up to 98.5% efficiency
- 32A per MPP tracker
- 150% DC oversizing & 110% AC overloading output
- Built-in global MPP scan
- Low start-up voltage & ultra-wide MPPT range

Assured Safety

- Type II SPD on AC & DC side
- IP66 ingress protection
- AFCI support (optional)*

Intelligent Design

- 24h monitoring (WiFi / LAN / 4G)
- Smart loads management (e.g. heat pump, smart EV charger)

Flexible Adaptability

- Built-in export power control function
- Ultra-high power density

* Feature to be upgraded in the future

*V2.8. Information may be subject to modify without notice. 650.00004.00

	X3-PRO-8K-G2	X3-PRO-10K-G2	X3-PRO-12K-G2	X3-PRO-15K-G2	X3-PRO-17K-G2	X3-PRO-20K-G2	X3-PRO-25K-G2	X3-PRO-30K-G2
PV INPUT								
Max. recommended PV array power	12.0 kWp	15.0 kWp	18.0 kWp	22.5 kWp	25.5 kWp	30.0 kWp	37.5 kWp	45.0 kWp
Max. PV input voltage ^①	1100 V							
Rated PV input voltage	650 V							
Operation voltage range	135 ~ 985 V							
MPPT voltage range ^②	160 ~ 980 V							
Start-up voltage	200 V							
No. of MPP trackers / strings per MPP tracker	2 / (2 / 2)						3 / (2 / 2 / 2)	
Max. input current per MPPT	32 A							
Max. input short circuit current per MPPT	40 A							
AC OUTPUT								
Rated output power	8 kW	10 kW ^③	12 kW	15 kW ^⑤	17 kW	20 kW	25 kW	30 kW ^⑥
Rated output current	12.2 A	15.2 A	18.2 A	22.8 A	25.8 A	30.3 A	37.9 A	45.5 A
Max. output apparent power	8.8 kVA	11.0 kVA ^④	13.2 kVA	16.5 kVA ^⑤	18.7 kVA	22.0 kVA	27.5 kVA	30.0 kVA ^⑥
Max. output continuous current	13.2 A	16.0 A	19.3 A	24.2 A	27.5 A	33.6 A	41.8 A	45.5 A
Rated AC voltage	3 / N / PE, 220 / 380 V 3 / N / PE, 230 / 400 V							
Rated AC frequency	50 Hz / 60 Hz							
AC frequency range ^③	50 ± 5 Hz / 60 ± 5 Hz							
Adjustable power factor range	~ 1 (0.8 lagging to 0.8 leading)							
THDi (rated power)	< 3%							
EFFICIENCY								
Max. efficiency	98.2%			98.3%			98.5%	
European efficiency	97.7%			97.8%			98.0%	
ENVIRONMENT LIMIT								
Ingress protection	IP66							
Operation temperature range	-30 ~ 60°C							
Max. operation altitude	4000 m							
Relative humidity	0 ~ 100 % RH (condensing)							
Overvoltage category	Mains: III / PV: II							
GENERAL								
Dimensions (W x H x D)	482 x 417 x 186 mm							
Net weight	24.5 kg			26.0 kg			28.0 kg	
Cooling concept	Natural cooling				Smart air cooling			
Communication interfaces	RS485 / DRM, optional: meter							
Power consumption (night)	< 3 W							
Topology	Non-isolated							
Certifications	VDE4105, EN 50549, AS 4777.2, IEC 61727, IEC 62116, IEC 61683, IEC 60068, EN 50530, NB/T 32004, IEC/EN 62109-1, IEC/EN 62109-2							
AC auxiliary power supply (APS)	Optional							
PROTECTION								
Protections	Over / under voltage protection, DC isolation protection, DC reverse-polarity protection, Grid monitoring, DC injection monitoring, Back feed current monitoring, Residual current detection, Over temperature protection, AC overcurrent protection, AC short-circuit protection							
Active anti-islanding method	Frequency shift							
Surge protection (DC / AC)	DC: Type II, AC: Type II							
Arc-fault circuit interrupter (AFCI)	Optional							

① The maximum input voltage is the upper limit of the DC voltage. Any higher input DC voltage would probably damage the inverter
 ② Input voltage exceeding the MPPT voltage range may trigger inverter protection
 ③ The AC frequency range may vary from different country codes
 ④ 9999 W / VA for AS4777.2
 ⑤ 14999 W / VA for AS4777.2
 ⑥ 29999 W / VA for AS4777.2



SMART SOLAR ENERGY SOLUTIONS
C&I PV Inverter

Three-phase C&I On-grid Inverter



X3-MEGA G2

40kW / 50kW / 60kW

High Efficiency

- Up to 98.4% efficiency
- 32A per MPP tracker
- 180~1000Vdc MPPT voltage range
- 150% PV oversizing, 110% overloading output

Assured Safety

- IP66 protection degree
- Type II SPD on AC&DC side (Optional)
- String current monitoring
- 24 hours operation monitoring

Intelligent Design

- Night-time reactive power compensation
- Smart air cooling enhances fan longevity
- Heat dissipation reduces system weight & size by over 10%
- I-V Curve diagnosis

Flexible Adaptability

- Built-in export power control function
- Remote setting and upgrading
- Aluminium AC cable connection available
- Max. 6 MPPTs, 2 strings per MPP tracker

	X3-MGA-40K-G2	X3-MGA-50K-G2	X3-MGA-60K-G2
PV INPUT			
Max. recommended PV array power	60 kWp	75 kWp	90 kWp
Max. PV input voltage ^①	1100 V		
Nominal PV input voltage	600 V		
MPPT voltage range ^②	180 ~ 1000 V		
Start-up voltage	200 V		
No. of MPP trackers / Strings per MPP tracker	4 / 2	5 / 2	6 / 2
Max. input current per MPPT	32 A		
Max. input short circuit current per MPPT	46 A		
AC OUTPUT			
Rated output power	40 kW	50 kW	60 kW
Rated output current	60.6 A / 58 A	75.8 A / 72.5 A	90.9 A / 87 A
Max. output apparent power	44 kVA	55 kVA	66 kVA
Max. output continuous current	66.7 A / 63.8 A	83.3 A / 79.7 A	100 A / 95.7 A
Nominal AC voltage	3 / (N) / PE, 220 / 380 V 3 / (N) / PE, 230 / 400 V		
Nominal AC frequency	50 Hz / 60 Hz		
AC frequency range ^③	50 ± 5 Hz / 60 ± 5 Hz		
Adjustable Power Factor range	~ 1 (0.8 lagging to 0.8 leading)		
THDi (rated power)	< 3%		
EFFICIENCY			
Max. efficiency	98.4%		
European efficiency	98.1%		
ENVIRONMENT LIMIT			
Ingress protection	IP66		
Operating ambient temperature range	-25 ~ 60°C		
Max. operating altitude	4000 m		
Relative humidity	0 ~ 100% RH		
Overvoltage Category	Mains: III, PV: II		
GENERAL			
Dimensions (W × H × D)	630 × 521 × 286 mm		
Net weight	44.0 kg	44.5 kg	45.5 kg
Cooling concept	Smart air cooling		
Communication interfaces	RS485, DRM, Meter		
Power consumption (night)	< 2 W		
Topology	Non-isolated		
Certificates and approvals	IEC/EN 62109-1, IEC/EN 62109-2, NB/T 32004, EN 50549, AS4777.2, VDE4105, IEC 61727, IEC 62116, IEC 61683, IEC 60068, EN 50530		
AC auxiliary power supply (APS)	Optional		
PROTECTION			
Protections	Over / under voltage protection, DC isolation protection, DC reverse-polarity protection, Grid monitoring, DC injection monitoring, Back feed current monitoring, Residual current detection, AC overcurrent protection, AC overcurrent protection, AC short-circuit protection		
Active anti-islanding method	Frequency shift		
Surge protection (DC / AC)	DC: Type II, AC: Type II		
Arc-fault circuit interrupter (AFCI)	Optional		
Anti-PID	External		

① The maximum input voltage is the upper limit of the DC voltage. Any higher input DC voltage would probably damage the inverter

② Input voltage exceeding the MPPT voltage range may trigger inverter protection

③ The AC frequency range may vary from different country codes

Three-phase C&I On-grid Inverter



X3-FORTH

75kW / 80kW / 100kW / 110kW
120kW / 125kW

High Efficiency

- Up to 99% efficiency
- 32A per MPP tracker
- 180~1000Vdc MPPT voltage range
- 150% PV oversizing, 110% overloading output
- Max. 12 MPPTs, 2 strings per MPP tracker

Intelligent Design

- Night-time reactive power compensation
- Smart air cooling enhances fan longevity
- Heat dissipation reduces system weight & size by over 5%
- I-V curve diagnosis

Assured Safety

- IP66 protection degree
- AFCI support (optional)
- AC terminal temperature detection
- String current monitoring
- 24 hours operation monitoring
- Type II SPD on AC&DC side

Flexible Adaptability

- Built-in export power control function
- Remote setting and upgrading
- Aluminium AC cable connection available

	X3-FTH-75K	X3-FTH-80K	X3-FTH-100K	X3-FTH-110K	X3-FTH-120K	X3-FTH-125K
PV INPUT						
Max. recommended PV array power	120 kWp	120 kWp	150 kWp	165 kWp	180 kWp	188 kWp
Max. PV input voltage ^①	1100 V					
Nominal PV input voltage ^②	580 V / 600 V					
MPPT voltage range ^③	180 ~ 1000 V					
Start-up voltage	200 V					
No. of MPP trackers / Strings per MPP tracker	9 / 2		9 / 2 12 / 2 ^④		12 / 2	
Max. input current per MPPT	32 A					
Max. input short circuit current per MPPT	46 A					
AC OUTPUT						
Rated output power	75 kW	80 kW	100kW	110kW	120kW	125kW
Rated output current ^⑤	113.7A/108.7A	121.3A/116A	151.6A/145A	166.7A/159.5A	181.9A/174A	189.4A/181.2A
Max. output apparent power	75 kVA	88kVA	110kVA	121 kVA	132kVA	132kVA
Max. output continuous current ^⑤	113.7A/108.7A	133.4A/127.6A	166.7A/159.5A	183.4A/175.4A	200A/191.3A	200A/191.3A
Nominal AC voltage	3 / (N) / PE, 220 / 380 V 3 / (N) / PE, 230 / 400 V					
Nominal AC frequency	50 Hz / 60 Hz					
AC frequency range ^⑤	50 ± 5 Hz / 60 ± 5 Hz					
Adjustable Power Factor range	~ 1 (0.8 lagging to 0.8 leading)					
THDi (rated power)	< 3%					
EFFICIENCY						
Max. efficiency	98.6%					
European efficiency	98.3%					
ENVIRONMENT LIMIT						
Ingress protection	IP66					
Operating ambient temperature range	-25 ~ 60°C					
Max. operating altitude	4000 m					
Relative humidity	0 ~ 100% RH					
Overvoltage Category	Mains: III, PV: II					
GENERAL						
Dimensions (W × H × D)	985 × 660 × 327.5 mm					
Net weight	83 kg			87 kg		
Cooling concept	Smart cooling					
Communication interfaces	RS485, DRM					
Power consumption (night)	< 10 W					
Topology	Non-isolated					
Certificates and approvals	IEC/EN 62109-1, IEC/EN 62109-2, NB/T 32004, EN 50549, AS4777.2, VDE4105, IEC 61727, IEC 62116, IEC 61683, IEC 60068, EN 50530					
AC auxiliary power supply (APS)	Build-in					
PROTECTION						
Protections	Over / under voltage protection, DC reverse-polarity protection, DC isolation protection, Grid monitoring, DC injection monitoring, Back feed current monitoring, Residual current detection, Over temperature protection, AC overcurrent protection, AC short-circuit protection					
Active anti-islanding method	Frequency shift					
Surge protection (DC / AC)	DC: Type II, AC: Type II					
Arc-fault circuit interrupter (AFCI)	Optional					
Anti-PID	External					

① The maximum input voltage is the upper limit of the DC voltage. Any higher input DC voltage would probably damage the inverter

② The two data refer to different grid voltage 220V/230V(75~125kW models)

③ Input voltage exceeding the MPPT voltage range may trigger inverter protection

④ 9/12MPPTs is optional for 100kW and 110kW models

⑤ The AC frequency range may vary from different country codes

Three-phase C&I On-grid Inverter



X3-FORTH PLUS

120kW / 125kW / 136kW / 150kW

High Efficiency

- Up to 98.6% efficiency
- 200% oversizing
- 180~1000V, up to 65A per MPPT

Assured Safety

- IP66 ingress protection
- AFCI support (optional)
- AC terminal over temperature detection
- Automatic tripping DC switch
- Type II SPD on DC side (optional Type I + II SPD), Type II SPD on AC side

Intelligent Design

- Fan self-cleaning function for easier maintenance
- Night-time SVG voltage regulation support
- Remote settings and upgrades
- 24-hour monitoring

Flexible Adaptability

- 6 MPPTs, 4 strings per MPPT for precise power
- Reliable up to 5000m altitude
- Power line communication (PLC) (optional)*
- Built-in Anti-PID protection (optional)*

*Feature to be upgraded in the future

	X3-FTH-120K-P	X3-FTH-125K-P	X3-FTH-136K-P	X3-FTH-150K-P
PV INPUT				
Max. recommended PV array power	180.0 kWp	187.5 kWp	204 kWp	225 kWp
Max. PV input voltage ^①	1100 V			
Rated PV input voltage	580 V / 600 V			
MPPT voltage range ^②	180 ~ 1000 V			
Start up voltage	200 V			
No. of MPPT trackers / strings per MPPT tracker	6 / 4			
Max. input current per MPPT	65 A			
Max. input short circuit current per MPPT	82 A			
AC OUTPUT				
Rated output power	120 kW	125 kW	136 kW	150 kW
Rated output current	181.8 A / 174 A / 144.4 A	189.4 A / 181.2 A / 150.4 A	206.6 A / 196.3 A / 163.6 A	227.3 A / 217.4 A / 180.5 A
Max. output apparent power	132 kVA	137.5 kVA	150 kVA	165 kVA
Max. output continuous current	200.6 A @ 380 V	209 A @ 380 V	228 A @ 380 V	250.7 A @ 380 V
Max. short circuit current	500 A			
Rated AC voltage	3 / (N) / PE, 220 / 380 V, 230 / 400 V, 277 / 480 V			
Rated AC frequency	50 Hz / 60 Hz			
AC frequency range ^③	50 ± 5 Hz / 60 ± 5 Hz			
Adjustable power factor range	~ 1 (0.8 lagging to 0.8 leading)			
THDi (rated power)	< 3%			
EFFICIENCY				
Max. efficiency	98.6%			
European efficiency	98.2%			
ENVIRONMENT LIMIT				
Ingress protection	IP66			
Operation temperature range	-25 ~ 60°C			
Max. operation altitude	5000 m (derating above 4000 m)			
Relative humidity	0 ~ 100% RH (condensing)			
Overvoltage category	Mains: III, PV: II			
GENERAL				
Dimensions (W × H × D)	1082 × 724 × 373 mm			
Net weight	108.1 kg			
Cooling concept	Smart air cooling			
Communication interfaces	RS485, optional: PLC, Pocket WiFi / LAN / 4G			
Power consumption (night)	< 10 W			
Topology	Non-isolated			
Certifications	IEC 61727, IEC 62116, VDE4110, VDE4105, EN50549, NRS097, G99, RD1699, PPDS2020, CEI0-21, CEI0-16, VFR 2019			
PROTECTION				
Protections	Over / under voltage protection, DC isolation protection, DC reverse-polarity protection, Grid monitoring, DC injection monitoring, Back feed current monitoring, Residual current detection, Over temperature protection, AC overcurrent protection, AC short-circuit protection			
Active anti-islanding method	Frequency shift			
Surge protection (DC / AC)	DC: Type II (optional Type I + II), AC: Type II			
Arc-fault circuit interrupter (AFCI)	Optional			
AC auxiliary power supply (APS)	Built-in			
Anti-PID	Optional			

①The maximum input voltage is the upper limit of the DC voltage. Any higher input DC voltage would probably damage inverter

②Input voltage exceeding the MPPT voltage range may triggers inverter protection

③The AC frequency range may vary from different country codes



SMART SOLAR ENERGY SOLUTIONS
Utility PV Inverter

Utility Scale Distributed On-grid Inverter



X3-GRAND HV

300kW / 320kW / 333kW / 350kW

	X3-GRD-300K-HV	X3-GRD-320K-HV	X3-GRD-333K-HV	X3-GRD-350K-HV
PV INPUT				
Max. PV input power per MPPT	450 kWp	480 kWp	499.5 kWp	525 kWp
Max. PV input voltage ^①	1500 V			
Rated PV input voltage	1080 V			
MPPT voltage range ^②	500 ~ 1500 V			
Start up voltage	550 V			
No. of MPP trackers / strings per MPP tracker	6 / 5			
Max. input current per MPPT	75 A			
Max. input short circuit current per MPPT	115 A			
AC OUTPUT				
Rated output power	300 kW	320 kW	333 kW	350 kW
Rated output current	216.6 A	231 A	240.3 A	252.6 A
Max. output apparent power	300 kVA	320 kVA	333 kVA	352 kVA
Max. output continuous current	216.6 A	231 A	240.3 A	254 A
Rated AC voltage	3 / PE, 800 V			
Rated AC frequency	50 Hz / 60 Hz			
AC frequency range ^③	50 ± 5 Hz / 60 ± 5 Hz			
Adjustable power factor range	~ 1 (0.8 lagging to 0.8 leading)			
THDi (rated power)	< 3%			
EFFICIENCY				
Max. efficiency	99.03%			
European efficiency	98.80%			
ENVIRONMENT LIMIT				
Ingress protection	IP66			
Operation temperature range	-30 ~ 60°C			
Max. operation altitude	5000 m			
Relative humidity	0 ~100% RH (condensing)			
Overvoltage category	Mains: III, PV: II			
GENERAL				
Dimensions (W x H x D)	1225 x 825.5 x 369.1 mm			
Net weight	< 130 kg			
Cooling concept	Smart air cooling			
Communication interfaces	RS485, PLC, USB, DRM, DI * 1/DO * 1			
Power consumption (night)	15 W			
Topology	Non-isolated			
Certifications	IEC 61727, IEC 62116, VDE4110, VDE4105, EN50549, NRS097, G99, RD1699, PPDS2020, CEI0-21, CEI0-16, VFR 2019			
AC auxiliary power supply (APS)	Built-in			
PROTECTION				
Protections	Over / under voltage protection, DC isolation protection, DC reverse-polarity protection, Grid monitoring, DC injection monitoring, Back feed current monitoring, Residual current detection, Over temperature protection, AC overcurrent protection AC short-circuit protection			
Active anti-islanding method	Frequency shift			
Surge protection (DC / AC)	DC: Type II (optional Type I + II), AC: Type II			
Arc-fault circuit interrupter (AFCI)	Optional			
Anti-PID	Optional			

High Efficiency

- Up to 99.03% efficiency
- 500~1500Vdc MPPT range
- Max. 75A DC input per MPPT, optimized for high-power solar panel

Assured Safety

- AC & DC terminal temperature detection
- AFCI support (optional)*
- IP66 ingress protection
- Effective Anti-PID protection (optional)*
- Optional Type I+II SPD on DC side & Type II SPD on AC side*

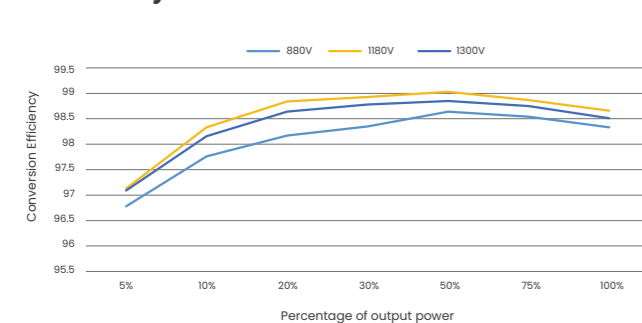
Intelligent Design

- IV curve scan
- 24 hours monitoring
- Night-time SVG voltage regulation support

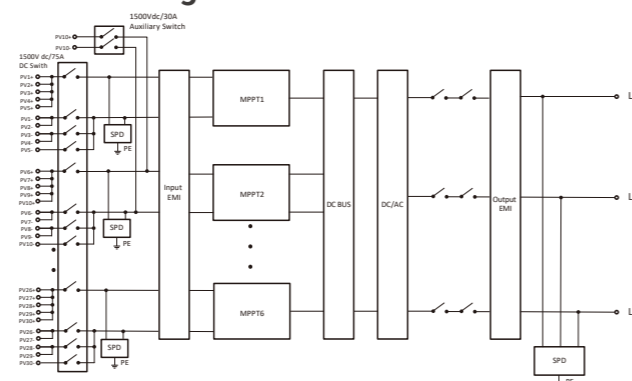
Flexible Adaptability

- 6 MPPTs, 5 strings per MPPT for precise power
- Power line communication (PLC)

Efficiency Curve



Circuit Diagram



* Feature to be upgraded in the future

① The maximum input voltage is the upper limit of the DC voltage. Any higher input DC voltage would probably damage inverter
 ② Input voltage exceeding the MPPT voltage range may triggers inverter protection
 ③ The AC frequency range may vary from different country codes



X-PID BOX

Enhanced System Stability

Utilizes cutting-edge Anti-Potential Induced Degradation (Anti-PID) technology for improved system stability

Wide Compatibility

Perfectly compatible with Mega G2 and Forth models, providing users with greater flexibility and a wider range of options

Compact and Lightweight Design

Combines ultra-lightweight construction with high performance, optimizing space and convenience for projects

Prolonged Equipment Lifespan

Integrated PID protection and restoration functions ensure durable system performance, delivering greater value to customers

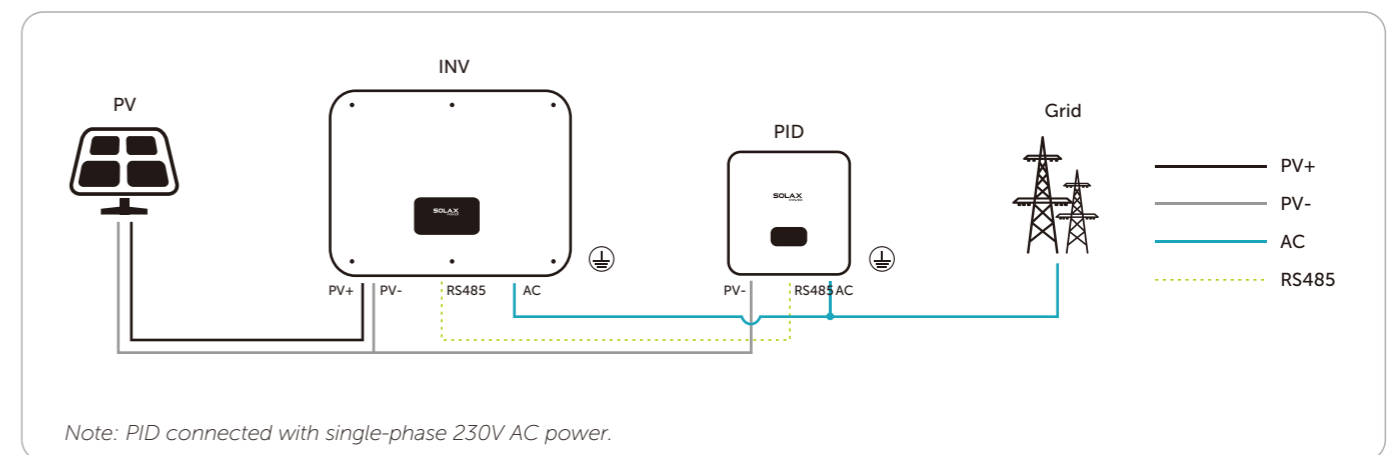
Versatile Installation Methods

Offers multiple easy-to-implement installation options to meet diverse project needs and site requirements

X-PID BOX

INPUT	
Rated input voltage [a.c. V]	230
Input voltage range [a.c. V]	165~300
Max. Input Current [A]	0.28
Rated input frequency/range [Hz]	50/60 (±5)
OUTPUT	
Output voltage range [d.c. V]	600 ^①
Max. output current [mA]	<10
Connection	PV-/ PE
DISPLAY/COMMUNICATION	
Communication interfaces	RS485
Display	LED
GENERAL DATA	
Dimensions (W × H × D) [mm]	210×206×62
Net weight [kg]	1.4
Operating ambient temperature range [°C]	-25~45
Storage/Operation relative humidity	0~100%
Max. operation altitude [m]	4000
Ingress protection	IP66
Cooling concept	Natural cooling
Certification	CE-LVD CE-EMC RoHS
FUNCTION	
Recovery type	Type P

① 400/800/1000 d.c. V Optional





XCB800A



Broadband HPLC 2.0 high-speed communication



Support long-distance communication



Easy maintenance, remote management and upgrades, reducing costs

XCB800A	
COMMUNICATION PORTS	
Max. number of devices	140
RS485 interface	7
MPLC interface	1 or 2 (optional)
LAN	NET1 / NET3, 10M / 100M / 1000M
WAN	NET2, 10M / 100M / 1000M
CAN	CAN-FD*2, CAN-2.0*1
Digital inputs	DI1 ~ DI12, dry contact; DI13 ~ DI18, wet contact
Digital outputs	8
Analog input	4
USB	USB 2.0*2
Fiber switch (optional)	2*1000 Mbps fiber ports and 8*10 / 100 / 1000 Mbps Ethernet ports
Fiber splice box (optional)	Input*2 and output*8 ST single mode
I / O module (optional)	DI*10, RS485*6, CAN*2, DO*8
SOLAXCLOUD COMMUNICATION	
WAN	NET4, 10 M / 100 M / 1000 M
PLC COMMUNICATION	
Max. communication distance	≤ 1000 m
Max. number of each channel devices	≤ 60
Rated voltage	400 ~ 800 Vac
Max. withstands voltage	≤ 1000 Vac
POWER SUPPLY	
AC input	90 ~ 264 Vac, 50 Hz / 60 Hz
Power consumption	≤ 50 W
AMBIENT CONDITIONS	
Operation temperature range	-30 ~ 60 °C
Storage temperature	-40 ~ 70 °C
Relative humidity	0 ~ 95% RH (non-condensing)
Max. operation altitude	≤ 3000 m
Ingress protection	IP66
MECHANICAL PARAMETERS	
Dimensions (W × H × D)	918 × 628 × 290 mm
Net weight	≤ 45 kg
Installation type	Wall / Floor mounting
Cable specification	AC cable: outdoor UV protection cable of 1 ~ 1.5 mm ²
	MPLC cable: outdoor UV protection cable of 4 ~ 10 mm ²
	Fiber optic: outdoor UV protection cable, outside diameter ≤ 18mm
	RS485 cable: 2 * outdoor UV protection shielded twisted pair (STP) of 0.75 ~ 1.5 mm ²
MECHANICAL CONFIGURATION	
Configuration	The XCB800A includes EMS1000 PRO, AC adapter, SPD, MCCB, PLC, fiber switch (optional), fiber splice box(optional), I / O module (optional)

MVS Series

MV Transformer Station



3200kVA

Sustainable & Complete

- SF₆-free RMU option in line with EU environmental directives
- Comprehensive product portfolio tailored to diverse PV plants
- Optimized technical and economic performance for higher ROI

Durability & Protection

- IP54 enclosure for dust and water resistance
- C5 anti-corrosion treatment for sand, salt, and humidity
- Long-term resilience, reducing lifecycle maintenance risks

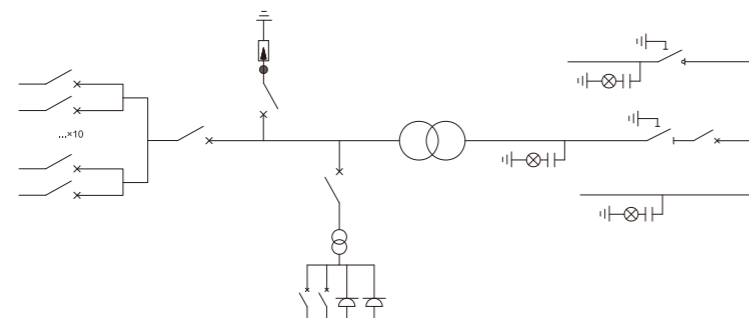
All-Climate Reliability

- Wide operating range: -25°C to +55°C
- Intelligent derating ensures stable output in extreme heat
- Proven performance in desert, cold, and humid environments

Flexible & Compatible

- Modular architecture enables scalable capacity expansion
- Multiple MV voltage options (15/20/30/33 kV) for global grids
- Factory pre-assembled design shortens project delivery time

Circuit Diagram



* Coming soon

*V1.0. Information may be subject to modify without notice. 650.00xx.00

MVS 3200	
LV SIDE	
AC power	3200 kVA @ 40°C
	3520 kVA @ 30°C
	3072 kVA @ 45°C
LV rated voltage	800 V
Frequency	50 Hz
LV rated current	2309 A
MCCB	800 V / 320 A × 10 pcs
ACB	800 V / 3200 A × 1 pcs
Total input LV switchgear	10
MV SIDE	
Rated voltage	15 kV, 20 kV, 30 kV, 33 kV
Tap range	-5% / -2.5% / 0 / 2.5% / 5%
Vector group	Dy11
Transformer type	oil-immersed
MV rated current	55.98 A
Impedance	7%
RMU model	CCV
Insulation type	SF ₆ , SF ₆ -free
Switch disconnecter operation mode	Manual
Circuit breaker operation mode	Electrical
Disconnecter operation mode	Manual
Auxiliary transformer	5kVA, Dyn11, 800/400V
ENVIRONMENT LIMIT	
Ingress protection	IP54, C5
Operating temperature range	-25 ~ 55°C (> 40°C derating)
Max. operating altitude	2000 m
Relative humidity	0 ~ 95% RH (condensing)
GENERAL	
Dimensions (W × H × D)	6058 × 2896 × 2438 mm
Net weight	15000 kg
Certifications	IEC 60076, IEC 61439-1, IEC 62271-200, IEC 62271-202, EN 50588-1

MVS Series

MV Transformer Station



4480kVA

Sustainable & Complete

- SF₆-free RMU option in line with EU environmental directives
- Comprehensive product portfolio tailored to diverse PV plants
- Optimized technical and economic performance for higher ROI

Durability & Protection

- IP54 enclosure for dust and water resistance
- C5 anti-corrosion treatment for sand, salt, and humidity
- Long-term resilience, reducing lifecycle maintenance risks

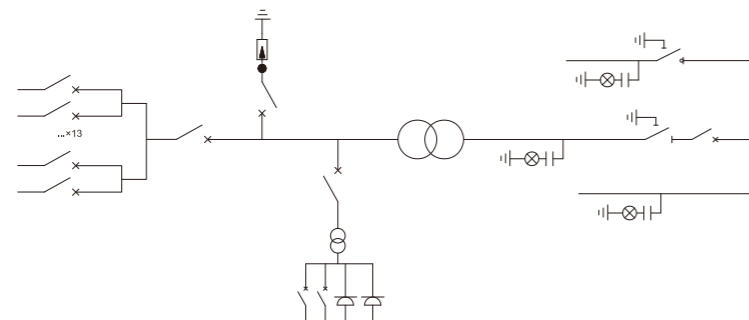
All-Climate Reliability

- Wide operating range: -25°C to +55°C
- Intelligent derating ensures stable output in extreme heat
- Proven performance in desert, cold, and humid environments

Flexible & Compatible

- Modular architecture enables scalable capacity expansion
- Multiple MV voltage options (15/20/30/33 kV) for global grids
- Factory pre-assembled design shortens project delivery time

Circuit Diagram



* Coming soon

*V1.0. Information may be subject to modify without notice. 650.00xxx.00

MVS 4480	
LV SIDE	
AC power	4480 kVA @ 40°C 4928 kVA @ 30°C 4305 kVA @ 45°C
LV rated voltage	800 V
Frequency	50 Hz
LV rated current	3233 A
MCCB	800 V / 320 A × 13 pcs
ACB	800 V / 4000 A × 1 pcs
Total input LV switchgear	13
MV SIDE	
Rated voltage	15 kV, 20 kV, 30 kV, 33 kV
Tap range	-5% / -2.5% / 0 / 2.5% / 5%
Vector group	Dy11
Transformer type	oil-immersed
MV rated current	78.38 A
Impedance	8%
RMU model	CCV
Insulation type	SF ₆ , SF ₆ -free
Switch disconnecter operation mode	Manual
Circuit breaker operation mode	Electrical
Disconnecter operation mode	Manual
Auxiliary transformer	5 kVA, Dyn11, 800 / 400 V
ENVIRONMENT LIMIT	
Ingress protection	IP54, C5
Operating temperature range	-25 ~ 55°C (> 40°C derating)
Max. operating altitude	2000 m
Relative humidity	0 ~ 95% RH (condensing)
GENERAL	
Dimensions (W × H × D)	6058 × 2896 × 2438 mm
Net weight	17000 kg
Certifications	IEC 60076, IEC 61439-1, IEC 62271-200, IEC 62271-202, EN 50588-1

MVS Series

MV Transformer Station



6400kVA

Sustainable & Complete

- SF₆-free RMU option in line with EU environmental directives
- Comprehensive product portfolio tailored to diverse PV plants
- Optimized technical and economic performance for higher ROI

Durability & Protection

- IP54 enclosure for dust and water resistance
- C5 anti-corrosion treatment for sand, salt, and humidity
- Long-term resilience, reducing lifecycle maintenance risks

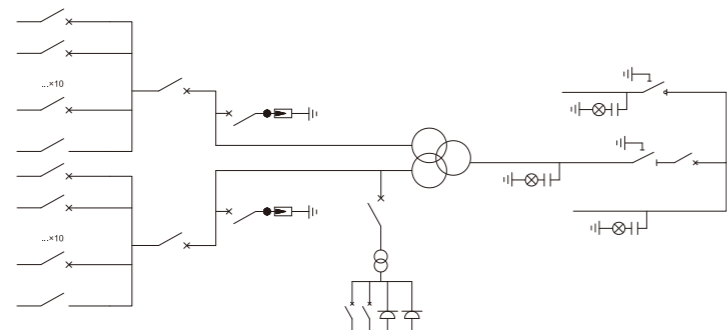
All-Climate Reliability

- Wide operating range: -25°C to +55°C
- Intelligent derating ensures stable output in extreme heat
- Proven performance in desert, cold, and humid environments

Flexible & Compatible

- Modular architecture enables scalable capacity expansion
- Multiple MV voltage options (15/20/30/33 kV) for global grids
- Factory pre-assembled design shortens project delivery time

Circuit Diagram



* Coming soon

*V1.0. Information may be subject to modify without notice. 650.00xxx.00

MVS 6400	
LV SIDE	
AC power	6400 kVA @ 40°C
	7040 kVA @ 30°C
	6150 kVA @ 45°C
LV rated voltage	800 V
Frequency	50 Hz
LV rated current	2309.5 A × 2
MCCB	800 V / 320 A, 2 × 10 pcs
ACB	800 V / 4000 A, 2 × 1pcs
Total input LV switchgear	20
MV SIDE	
Rated voltage	15 kV, 20 kV, 30 kV, 33 kV
Tap range	-5% / - 2.5% / 0 / 2.5% / 5%
Vector group	Dy11
Transformer type	oil-immersed
MV rated current	112 A
Impedance	8%
RMU model	CCV
Insulation type	SF ₆ , SF ₆ -free
Switch disconnecter operation mode	Manual
Circuit breaker operation mode	Electrical
Disconnecter operation mode	Manual
Auxiliary transformer	5 kVA, Dyn11, 800 / 400 V
ENVIRONMENT LIMIT	
Ingress protection	IP54, C5
Operating temperature range	-25 ~ 55°C (> 40°C derating)
Max. operating altitude	2000 m
Relative humidity	0 ~ 95% RH (condensing)
GENERAL	
Dimensions (W × H × D)	6058 × 2896 × 2438 mm
Net weight	20000 kg
Certifications	IEC 60076, IEC 61439-1, IEC 62271-200, IEC 62271-202, EN 50588-1

MVS Series

MV Transformer Station



8960kVA

Sustainable & Complete

- SF₆-free RMU option in line with EU environmental directives
- Comprehensive product portfolio tailored to diverse PV plants
- Optimized technical and economic performance for higher ROI

Durability & Protection

- IP54 enclosure for dust and water resistance
- C5 anti-corrosion treatment for sand, salt, and humidity
- Long-term resilience, reducing lifecycle maintenance risks

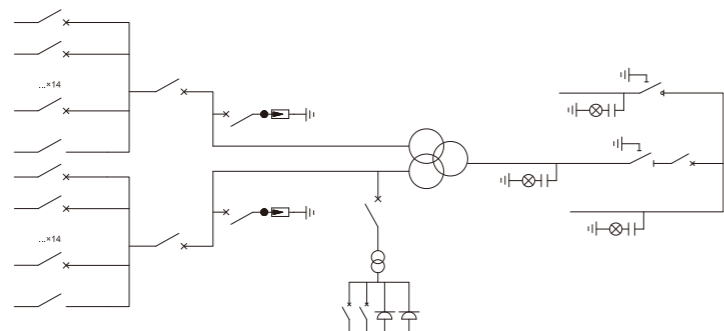
All-Climate Reliability

- Wide operating range: -25°C to +55°C
- Intelligent derating ensures stable output in extreme heat
- Proven performance in desert, cold, and humid environments

Flexible & Compatible

- Modular architecture enables scalable capacity expansion
- Multiple MV voltage options (15/20/30/33 kV) for global grids
- Factory pre-assembled design shortens project delivery time

Circuit Diagram



* Coming soon

*V1.0. Information may be subject to modify without notice. 650.00xxx.00

MVS 8960

LV SIDE	
AC power	8960 kVA @ 40°C
	9856 kVA @ 30°C
	8610 kVA @ 45°C
LV rated voltage	800 V
Frequency	50 Hz
LV rated current	3233.16 A × 2
MCCB	800 V / 320 A, 2 × 14pcs
ACB	800 V / 4000 A, 2 × 1pcs
Total input LV switchgear	28
MV SIDE	
Rated voltage	15 kV, 20 kV, 30 kV, 33 kV
Tap range	-5% / -2.5% / 0 / 2.5% / 5%
Vector group	Dy11
Transformer type	oil-immersed
MV rated current	156.76 A
Impedance	9.5%
RMU model	CCV
Insulation type	SF ₆ , SF ₆ -free
Switch disconnector operation mode	Manual
Circuit breaker operation mode	Electrical
Disconnecter operation mode	Manual
Auxiliary transformer	5 kVA, Dyn11, 800 / 400 V
ENVIRONMENT LIMIT	
Ingress protection	IP54, C5
Operating temperature range	-25 ~ 55°C (> 40°C derating)
Max. operating altitude	2000 m
Relative humidity	0 ~ 95% RH (condensing)
GENERAL	
Dimensions (W × H × D)	6058 × 2896 × 2438 mm
Net weight	23000 kg
Certifications	IEC 60076, IEC 61439-1, IEC 62271-200, IEC 62271-202, EN 50588-1

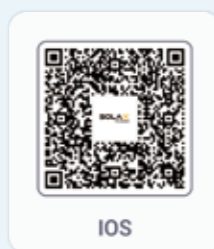


SMART SOLAR ENERGY SOLUTIONS

Smart Energy Management

Remote Monitoring Around The Clock

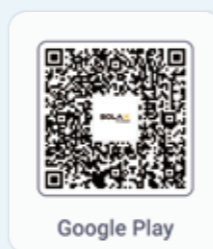
SolaXCloud Monitoring



IOS



Android



Google Play

XHub

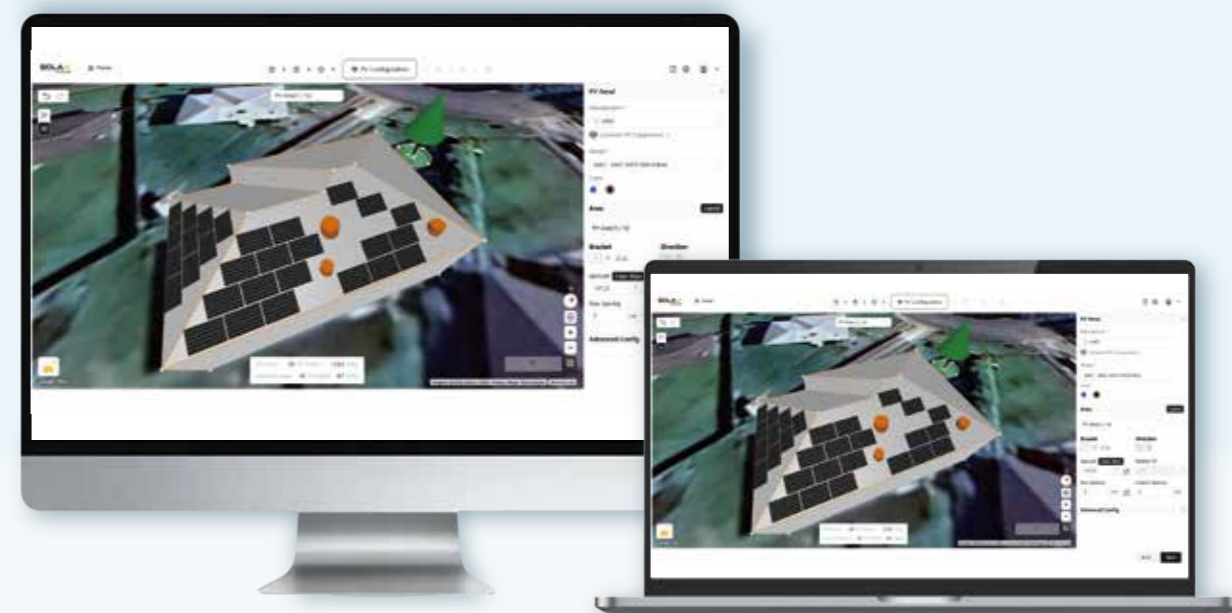


XCORE & XCOPILOT

Product Manual / Installation Guide / Q&A / After-sales Questions / Power Consumption Data



SolaX Design 2.0



Pocket WiFi v4.0



Pocket WiFi + LAN V2.0



Pocket 4G V3.0

Pocket WiFi V4.0



Feature

- Faster, more stable device connections
- Auto-caches data locally during disconnection: no data loss
- Supports Bluetooth/AP dual modes for seamless networking
- Smart grid integration for real-time energy management
- Real-time response with ultra-precise data
- 25% smaller than WiFi V3.0; sleeker and more portable
- 30% longer transmission distance vs. WiFi V3.0 with strong penetration
- Intuitive interface reduces misoperations

Pocket WiFi

Model	Pocket WiFi V4.0
Power supply	5V 50mA DC
Wireless module	WiFi 6, 2.4 GHz
Antenna gain	0.5 dBi
Data transfer interval	5 mins / 10s optional
Dimensions	83 x 44 x 26.5 mm
Weight	45 ± 10 g
Degree of protection	IP65
Operating temperature range	-35 ~ +60°C

Pocket WiFi+LAN V2.0



Feature

- Easily connect devices using Bluetooth for a hassle-free setup experience
- Ensure a stable and high-speed connection via Ethernet.
- Quick and easy installation with Plug and Play
- Maintain data transmission for up to 30 days without a network
- Smaller size for an elegant and coordinated look
- Physical buttons for easy reboot, reset, and AP mode activation
- Self-diagnosis capabilities for easy troubleshooting

Pocket LAN

Model	Pocket WiFi+LAN V2.0
Power supply	5V 200mA DC
Wireless module	WiFi 2.4 GHz
Ethernet	10/100 M
Antenna gain	0.86 dBi
Data transfer interval	5 mins / 10s optional
Dimensions	134 x 44 x 26.5 mm
Weight	80 ± 10 g
Degree of protection	IP65
Operating temperature range	-35 ~ +60°C

Pocket 4G V3.0



Feature

- Quick installation with "Plug & Play" function
- IP 65 dust prevention water proofing designs
- Stable data transmission and good reliability
- Offline data storage and resuming
- Multi-communication operator support

Pocket 4G

Model	Pocket 4G V3.0
Power Supply	5V 500mA DC
SIM Card Size	Nano - 4FF 12.3*8.8 mm
Support Band	LTE-FDD: B1/B3/B5/B7/B8/B20/B28 LTE-TDD: B38/B40/B41 GSM: 850/900/1800/1900MHz
Data Transfer Interval	5 mins
Dimensions	112*45.7*28.5 mm
Weight	135g
Degree of Protection	IP65
Operating Temperature Range	-35°C ~ +75°C

Accessories



M1-40



M3-40



M3-40-Dual

Plug-and-play CT solution for easy installation

50ms high refresh rate for more precise and faster control

Intelligent phase sequence and CT direction adjustment, automatically resolving installation issues

Supports remote settings via SolaX Cloud APP

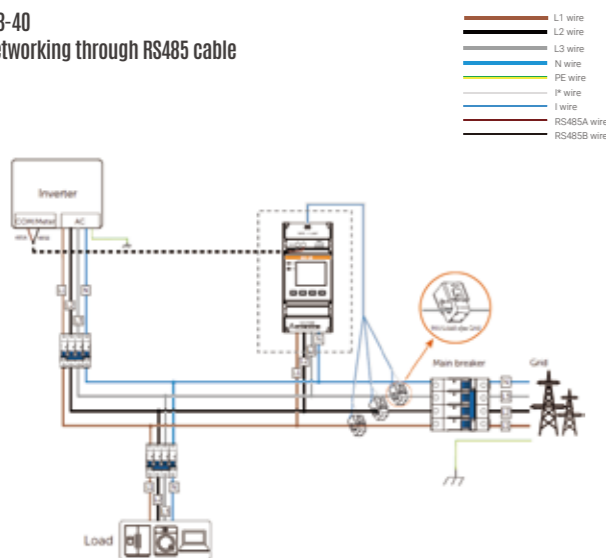
Separates strong and weak currents for enhanced security

Capable of monitoring power from both the grid and third-party inverters simultaneously*

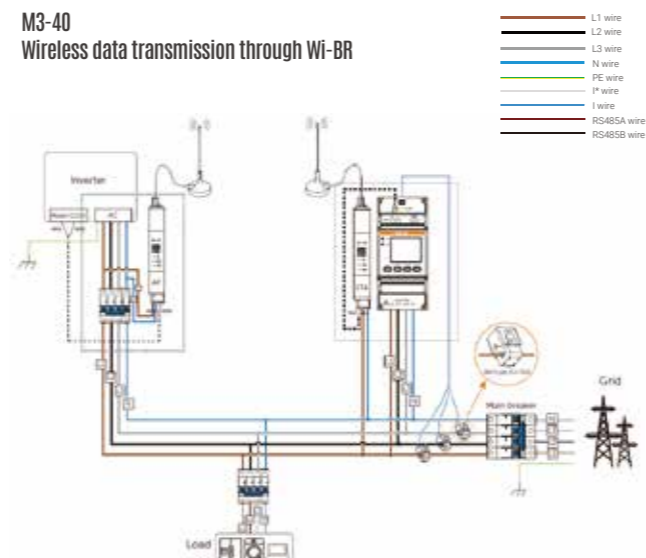
* supported only by the two-circuit model: M3-40-Dual

Solutions

M3-40
Networking through RS485 cable



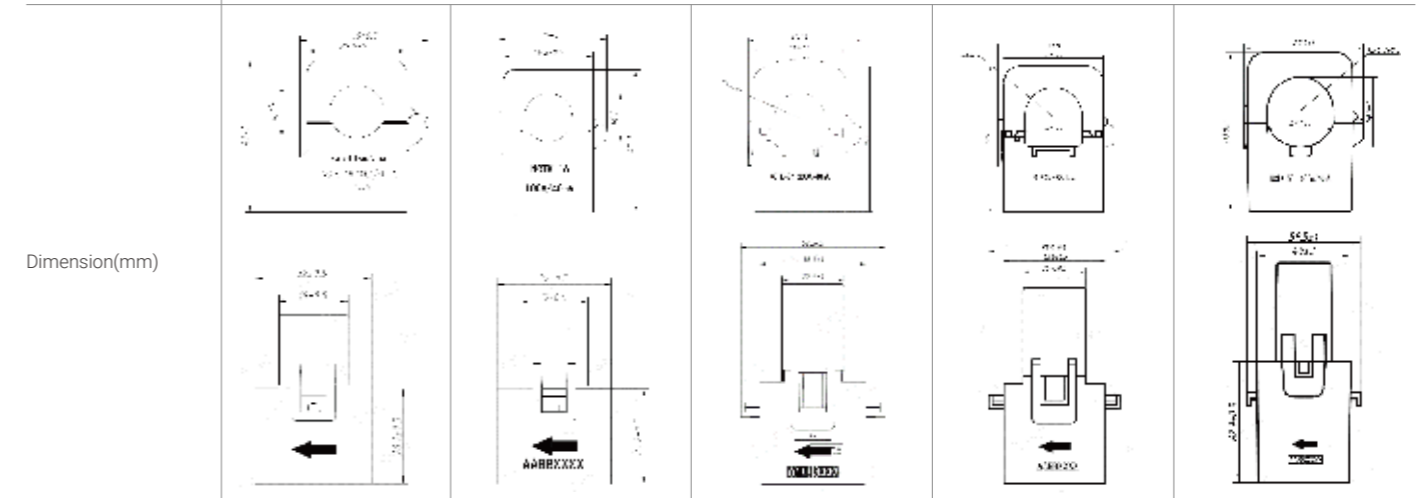
M3-40
Wireless data transmission through Wi-BR



*V1.4. Information may be subject to modify without notice. 650.00079.00

	M1-40	M3-40	M3-40-Dual
Power grid type	1P2W	3P3W / 3P4W	
Rated voltage	220 V ~ 240 V	3 × 220 / 380 V ~ 3 × 240 / 415 V	3 × 57.7 / 100 V ~ 3 × 240 / 415 V
Operating voltage	100 V ~ 288 V	100 V ~ 280 V	50 V ~ 480 V
Current	*A / 40 mA		
Recommended CT specification	100 A / 40 mA, 200 A / 40 mA, 400 A / 40 mA, 600 A / 40 mA		
Recommended rogowski coil specification	1000 A / 40 mA		
Power consumption	< 1.2 W	< 1.5 W	< 1.2 W
Measurement accuracy class	Voltage and current: Class 0.5 Active power: Class 1 Reactive power: Class 2		
Resolution requirement	Active power: 0.1 W Frequency: 0.001 Hz		
Frequency	45 Hz ~ 65 Hz		
Frequency tolerance	0.01 Hz		
Operating temperature	-40°C ~ 70°C		
Operating humidity	≤ 95% RH (non-condensing)		
Operating altitude	< 4000 m		
Degree of protection	IP20		
Dimensions (W x H x D)	18 mm × 100 mm × 65.5 mm	45 mm × 100 mm × 65.5 mm	72 mm × 100 mm × 65.5 mm

	SCT-16 Split Core 100A/40mA	SCT-16 Split Core 100A/40mA(3in1)	SCT-24 Split Core 200A/40mA(3in1)	SCT-36 Split Core 400A/40mA(3in1)	SCT-50 Split Core 600A/40mA(3in1)
Frequency	50 / 60 Hz				
Rated current	100 A	100 A	200 A	400 A	600 A
Rated output	40 mA (AC)				
Inner Diameter	16mm	16mm	24mm	36mm	50mm
Secondary load	20 Ω				
Accuracy	Class 0.5				
Transformation ratio	2500:1	2500:1	5000:1	10000:1	15000:1
Installation	Split-Core				
Altitude	≤ 4000 m				
Operating temperature	-40 °C ~ 85 °C		-40 °C ~ 70 °C		
Operating humidity	≤ 95%		≤ 70%		
Dielectric strength	3 kV / 1 mA / 1 min				
Insulation resistance	500 MΩ / 500 Vdc				
Case material	PA / UL 94-V0				
Bobbin	PBT / UL 94-V0				
Core	Ferrite				
Enameled wire	Copper				
Leads	UL 1581, 24 AWG				
Certification	CE, UL, RoHS, REACH				
Line length	2 m				



Accessories



Wireless Bridge

Wi-BR

Wide Coverage

- Efficient and stable data transmission up to 200m

Strong Penetration

- Penetration ability up to 4 floors (about 30 meters vertically)

Intelligent Design

- DIN-rail installation for 85-277V AC power supply

Flexible Adaptability

- Compatible with single & three-phase meters

* Wireless communication may be affected by obstacles in complex environments, reducing transmission distance. Lab data shows that it can reach up to 200 meters horizontally in open spaces. However, with walls blocking the signal, installation distance should be reduced, supporting up to 4 layers of partition walls (about 30 meters vertically)

*V1.1. Information may be subject to modify without notice. 650.00082.00

Wi-BR

Working method	AP / STA
Protocol	IEEE 802.11ah
Communication terminal	RS485 * 1 (for each model)
Phase voltage	85 ~ 277 Vac
Max. power consumption	2 W
Operating temperature	-25 ~ 55°C
Dimensions	18 x 98 x 66 mm
Mounting type	DIN rail
Ingress protection rating	IP20
Altitude	≤ 2000 m

Comparison of the performance of four methods across different communication aspects

The following data is obtained through actual testing using inverter equipped with electricity meter in Solax laboratory. The actual on-site transmission distance may vary depending on the installation environment.

Security	SolaX	Wi-Fi	LORA	Zigbee
Performance	Best	Best	Poor	Good

Anti-interference	SolaX	Wi-Fi	LORA	Zigbee
Performance	Best	Best	Poor	Good

Transmission capability	SolaX	Wi-Fi4/5/6	LORA	Zigbee
Transmission distance	200m	100m	130m	20m

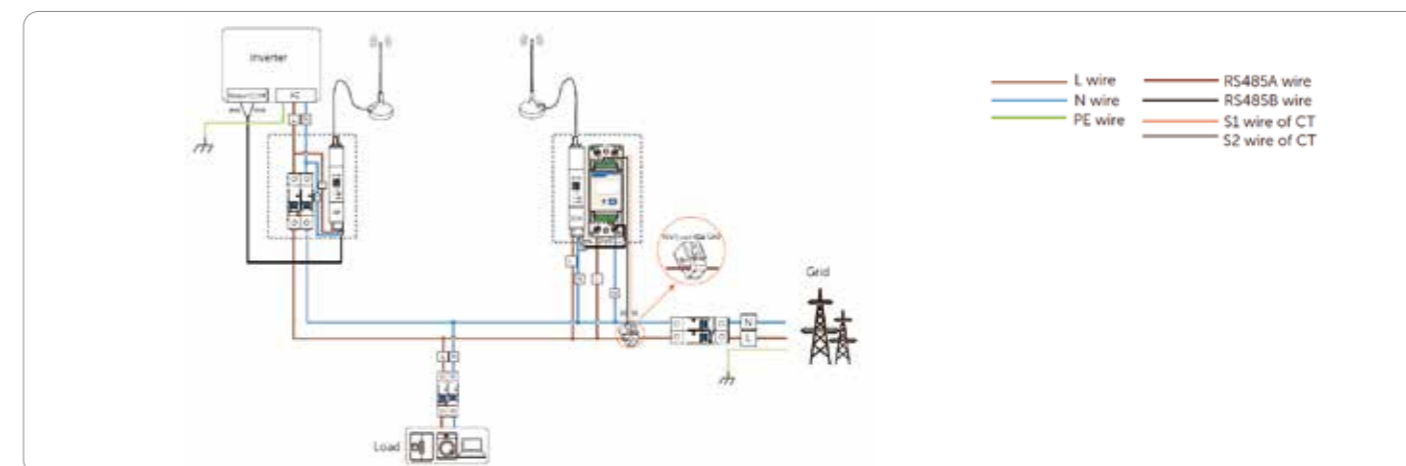
*The test data was obtained in an open area without any barriers.

Signal penetration ^①	SolaX	Wi-Fi	LORA	Zigbee
Number of floor ^②	4	1	3	1

*The results were obtained under test conditions of penetrating 120 cm thick reinforced concrete, with a floor-to-floor spacing of 4.5 meters.

① The wall-penetration test is an independent scenario, and its data does not affect or interact with the open-space scenario data
 ② The complete functions of the inverter can work properly through control across this number of floors

Installation



*The product images are for illustration only and may have slight differences from the actual product

Accessories



DDSU666 5(80)A
DTSU666 5(80)A
DDSU666-CT 200A/5A
DTSU666-CT 200A/5A



DDSU666 5(80)A



DTSU666 5(80)A



DDSU666-CT 200A/5A



DTSU666-CT 200A/5A

GENERAL DATA				
Dimension (H xW xD)	100 x 36 x 65.5 mm (3.9 x 1.4 x 2.6 inch)	100 x 72 x 65.5 mm (3.9 x 2.8 x 2.6 inch)	100 x 36 x 65.5 mm (3.9 x 1.4 x 2.6 inch)	100 x 72 x 65.5 mm (3.9 x 2.8 x 2.6 inch)
Mounting type	DIN35 Rail			
Weight (including cables)	1.2 kg (2.6 lb)	1.5 kg (3.3 lb)	1.2 kg (2.6 lb)	1.5 kg (3.3 lb)
POWER SUPPLY				
Power grid type	1P2W	3P4W/3P3W	1P2W	3P4W/3P3W
Input voltage (phase voltage)	184Vac ~ 264.5Vac	154 Vac ~ 286 Vac	184Vac ~ 264.5Vac	154 Vac ~ 286 Vac
Power consumption	≤1 W	≤1.5 W	≤1 W	≤1.5 W
MEASUREMENT RANGE				
Line voltage	/	290.5 Vac~ 539.5 Vac	/	290.5 Vac~ 539.5 Vac
Phase voltage	184Vac ~ 264.5Vac	168 Vac ~ 312 Vac	184Vac ~ 264.5Vac	168 Vac ~ 312 Vac
Current	0.25-5(80)A	0.25-5(80)A	0.015-1.5(6)A (CT: 200A)	0.015-1.5(6)A (CT: 200A)
MEASUREMENT ACCURACY				
Accuracy Class	Class B			Class C
COMMUNICATION				
Interface	RS485			
Baud rate	9,600 bps			
Communication protocol	Modbus-RTU			
ENVIRONMENT				
Operating temperature range	-25oC~+55oC	-10oC~+45oC	-25oC~+55oC	-10oC~+45oC
Storage temperature range	-25oC~+55oC	-25oC~+75oC	-25oC~+55oC	-25oC~+75oC
Operating humidity	<75 % non condensing			
OTHERS				
Accessories	/		RS485 Cable (10 m / 33 ft.), RJ45 connector	1 CT 200A/5A (1m) 3 CT 200A/5A (1m)

Accurate

- Class 1 measurement accuracy

Energy Saving

- Overall power consumption ≤1 W

Smart Energy

- Use clean, efficient renewable energy without pollution
- Green and low carbon, saving economy, sustainable development

Convenience

- Optional 35mm DIN rail or front mounting

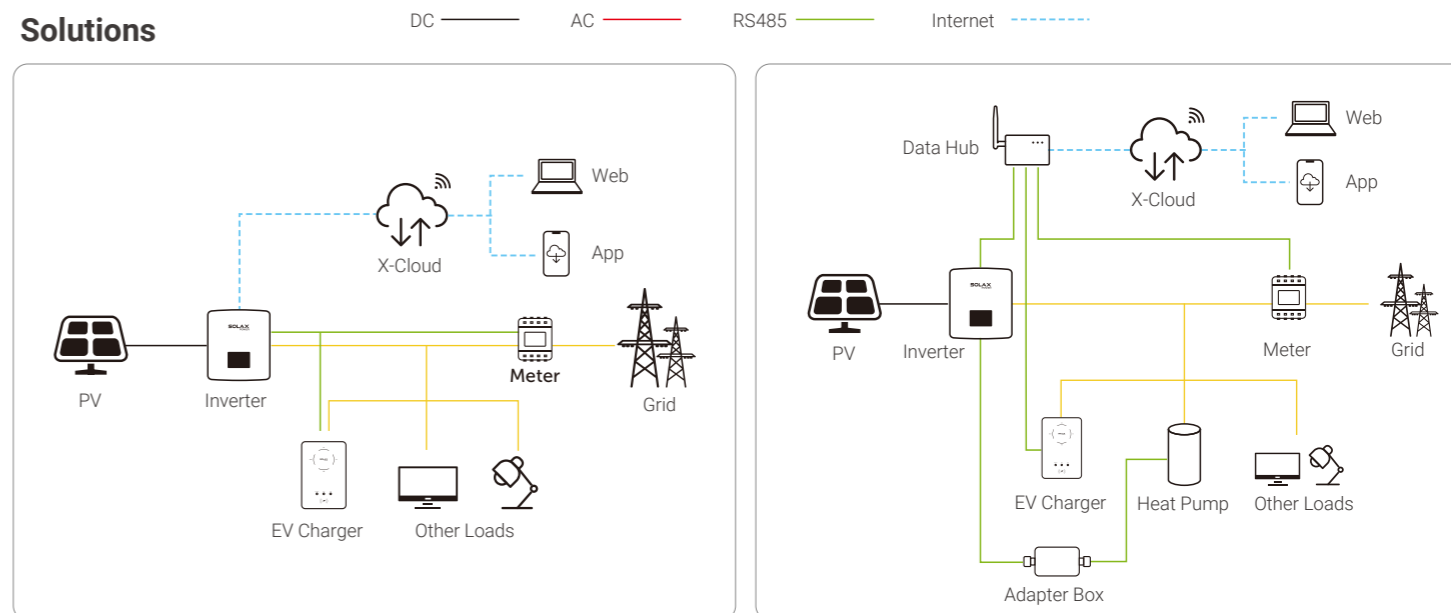
Safe & Reliable

- Fuse-free design for superior safety
- International authoritative certification, more reliable
- Natural cooling fully sealed design for better reliability

Smart Monitoring

- One terminal can control multiple devices, and perform parameter monitoring and fault query

Solutions



CT Optional

Model	LCTA97C2	LCTA97C4	ESCT-B812
Ratio	200A/5A	600A/5A	1500A/5A



EMS1000 PRO



EMS1000 PRO BOX

Smart & Flexible Features

- RS485, Ethernet, and 4G Support
- Up to 120 inverters connection
- Master-Slave device management (Up to 10 slave devices)
- Built-in web interface for local and remote monitoring

Efficiency & Simplicity

- Automatic inverter address search and assignment
- Auto-detection of EMS PRO slave devices
- Remote parameter configuration and system power adjustment support

Stability & Reliability

- Offline data transmission resumption and data loss prevention
- Industrial-grade reliability for high stability

EMS1000 PRO

SOLAXCLOUD COMMUNICATION	
WAN	NET4, 10 M / 100 M / 1000 M
4G	CAT4
SIM card size	Nano - 4 FF, 12.3 x 8.8 mm; Class C, 1.8 V
Sample rate	Per 10 seconds, 2G data package
COMMUNICATION PORTS	
LAN	NET1 / NET2 / NET3, 10M / 100M / 1000M
WAN	NET2,10/100/1000 Mbps
RS485	RS485 x 8
CAN	CAN-FD x 2, CAN-2.0 x 1
Digital inputs	DI1–DI12, dry contact; DI13–DI18, wet contact
Digital outputs	DO x 8
Analog input	AI x 4
USB	USB2.0 x 2
ENVIRONMENT LIMIT	
Operating temperature	-40 ~ 60°C
Relative humidity	5 ~ 95% RH (non-condensing)
Max. operating altitude	3000 m
Ingress protection	IP20
POWER SUPPLY	
DC input voltage	DC 12 ~ 24 V
DC input current	0.65 A avg (1.17 A peak)
Power consumption	15.6 W avg (28 W peak)
MECHANICAL DATA	
Dimensions (W x H x D)	232 x 113.2 x 59 mm
Net weight	1400 g
Installation method	DIN-rail mounting, Wall mounting
CERTIFICATES AND APPROVALS	
Certificates and approvals	CE, RCM, SRRC

EMS1000 PRO BOX-8

EMS1000 PRO BOX-16

SOLAXCLOUD COMMUNICATION		
WAN	NET4, 10 / 100 / 1000 Mbps	NET4, 10 / 100 / 1000 Mbps
4G	CAT4	CAT4
SIM card size	Nano - 4FF, 12.3 x 8.8 mm; Class C, 1.8 V	Nano - 4FF, 12.3 x 8.8 mm; Class C, 1.8 V
Sample rate	Per 10 seconds, 2G Data Package	Per 10 seconds, 2G Data Package
COMMUNICATION PORTS		
LAN	LAN x 7, 10 / 100 / 1000 Mbps	LAN x 15, 10 / 100 / 1000 Mbps
WAN	NET2, 10 / 100 / 1000 Mbps	NET2, 10 / 100 / 1000 Mbps
RS485	RS485 x 8	RS485 x 8
Digital Inputs	DI1 ~ DI12, dry contact; DI13 ~ DI18, wet contact	DI1 ~ DI12, dry contact; DI13 ~ DI18, wet contact
Digital Outputs	DO x 8	DO x 8
Analog Input	AI x 4	AI x 4
ENVIRONMENT LIMIT		
Operating Temperature	-30 ~ 55°C	-30 ~ 55°C
Relative humidity	5 ~ 95% RH (non-condensing)	5 ~ 95% RH (non-condensing)
Max. operating altitude	3000 m	3000 m
Degree of protection	IP54	IP54
POWER SUPPLY		
AC Input Voltage	100 ~ 240 V; 50 Hz / 60 Hz	100 ~ 240 V; 50 Hz / 60 Hz
Power Consumption	34.6 W Max	39.0 W Max
MECHANICAL DATA		
Dimensions (W x D x H)	450 x 283 x 177 mm	450 x 283 x 177 mm
Weight	5.3 kg	5.3 kg
Installation Method	Wall Mounting	Wall Mounting
CERTIFICATES AND APPROVALS		
Compliance	CE, RCM, SRRC	CE, RCM, SRRC

*V1.0. Information may be subject to modify without notice. 650.00095.00



SMART SOLAR ENERGY SOLUTIONS
EV Charger

EV Charger



SMART EV CHARGER

X1-EVC
7.2kW

X3-EVC
11kW / 22kW

High Efficiency

- Capable of 100% green energy
- Maximizes surplus green energy utilization in a zero-export system

Assured Safety

- Current leakage protection (30mA AC & 6mA DC)
- Smart dynamic load balance control

Intelligent Design

- Smart RFID management function
- Smart APP remote control

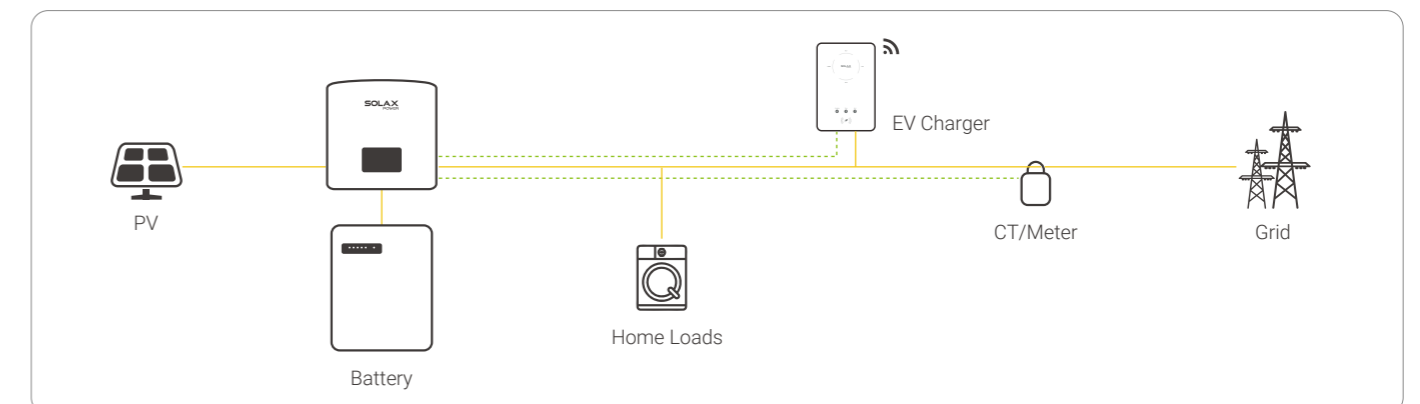
Flexible Adaptability

- Selectable plug or socket outlet
- Easy indoor and outdoor installation

	X1-EVC-7.2K	X3-EVC-11K	X3-EVC-22K
AC NOMINAL INPUT			
Phases/Lines	Single phase	Three phase	Three phase
Voltage	1 / N / PE, 230 V	3 / N / PE, 230 / 400 V	3/N/PE, 230 / 400 V
Frequency	50 ± 5 Hz / 60 ± 5 Hz	50 ± 5 Hz / 60 ± 5 Hz	50 ± 5 Hz / 60 ± 5 Hz
AC NOMINAL OUTPUT			
Voltage	1 / N / PE, 230 V	3 / N / PE, 230 / 400 V	3 / N / PE, 230 / 400 V
Current	32 A	16 A	32 A
Power	7.2 kW	11 kW	22 kW
INTERFACE			
Wireless module		Wi-Fi 2.4GHz	
Ethernet		10 / 100 M	
RS485		Yes	
RFID		Yes	
OCPP 1.6 (JSON)		Yes	
LCD screen		Optional	
CT clamps	X1	X3	X3
GENERAL DATA			
Housing material	Plastic / Metal		
Installation method	Wall-mount / Pedestal-mount (Optional)		
Wall-mount bracket	Yes		
Charging outlet	Type P (Charging cable with plug) / Type S (Socket-outlet)		
Cable length	6.5 m (Type P)		
Operating temperature	-30 ~ 50°C		
Working humidity	5 ~ 95% RH (non-condensing)		
Working altitude	<2000 m		
Degree of protection	IP65		
Impact resistant	IK10 (Housing) / IK08 (LCD screen)		
Application site	Indoor / Outdoor		
Cooling concept	Natural cooling		
Dimension (W x H x D)	249 x 370 x 155 mm (for type S) / 265 x 370 x 155 mm (for type P)		
Net weight	7 kg (for type S) / 10.5 kg (for type P)		
PROTECTION			
Multiple protection	Over/Under voltage protection, Overload protection, Shortcircuit protection, Current leakage protection, Grounding protection, Surge protection, Overtemperature protection		
Integral earth leakage protection	Integrated current failure monitoring (30mA AC & 6mA DC)		
Built-in pen fault technology ^①	According to BS 7671:2018 requirements		
Safety standard	IEC 61851-1:2017, IEC 62196-2:2016		
Encrypted communication	TLS		
Certification	CE, UKCA, LVD, EMC, RED		

① Only for chargers sold in the UK region

Solution



*V1.3. Information may be subject to modify without notice. 650.00043.00

EV Charger



Smart EV Charger G2

X1-HAC-4 / X1-HAC-7
X3-HAC-11 / X3-HAC-22

High Efficiency

- Capable of 100% green energy
- Automatic switch between single and three phases
- Maximizing surplus green energy utilization in a zero-export system

Assured Safety

- Current leakage protection (30mA AC & 6mA DC)
- Smart dynamic load balance control

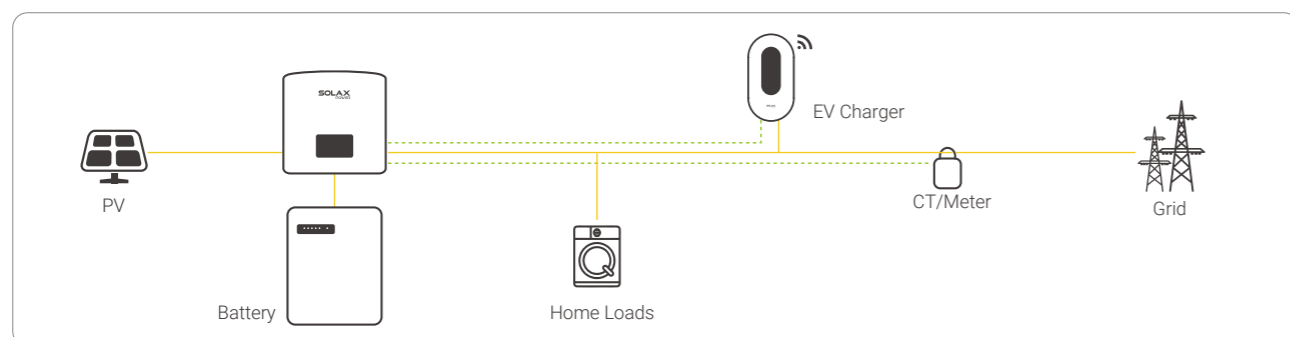
Intelligent Design

- Smart RFID management function
- Smart APP remote control

Flexible Adaptability

- Selectable plug or socket outlet
- Easy indoor and outdoor installation
- Supporting multiple communication protocols

Solutions



*V1.4 Information may be subject to modify without notice. 650.00067.00

	X1-HAC-4	X1-HAC-7	X3-HAC-11	X3-HAC-22
AC NOMINAL INPUT				
Voltage	230 V	230 V	400 V	400 V
Frequency	50 Hz / 60 Hz	50 Hz / 60 Hz	50 Hz / 60 Hz	50 Hz / 60 Hz
Grounding type	TN, TT, IT	TN, TT, IT	TN, TT, IT	TN, TT, IT
AC NOMINAL OUTPUT				
Voltage	230 V	230 V	400 V	400 V
Current	6-20 A (single phase)	6-32 A (single phase)	6-16 A (single phase or three phases)	6-32 A (single phase or three phases)
Power	1.4 ~ 4.6 kW	1.4 ~ 7.2 kW	1.4 ~ 11 kW	1.4 ~ 22 kW
INTERFACE & COMMUNICATION				
Communication interface	Wi-Fi / Ethernet / 4G (optional) / RS 485 × 2			
Protocol	OCPP 1.6j, Modbus TCP, Modbus RTU, Cloud API			
Communication	IEC 61851-1			
Authentication	Plug & Charge / RFID (ISO-14443-A) / APP			
MID meter	External (optional)			
HMI	RGB LED / APP / LCD (optional)			
Remote control	APP & Web			
Application	Residential / Destination place / Public			
GENERAL DATA				
Housing material	PC			
Installation method	Wall / Pedestal (optional)			
Charging outlet	Type2 plug / Type2 socket (IEC 62196)			
Cable length	6.5 m (Type P)			
Operation temperature	-30~50°C (without screen) / -25~50°C (with screen)			
Storage temperature	-40 ~ 60°C			
Operation humidity	5% ~ 95% RH (non-condensing)			
Max. operation altitude	2000 m			
Degree of protection	IP65 (plug type) / IP54 (socket type) IK10 (housing) / IK08 (screen)			
Cooling method	Natural cooling			
Application site	Indoor / Outdoor			
Weight	5 kg for plug type	3 kg for socket type 5 kg for plug type	3 kg for socket type 6.5 kg for plug type	3 kg for socket type 6.5 kg for plug type
Dimension (W × H × D)	206 × 390 × 139 mm			
PROTECTION				
Multiple protection	Over/Under voltage protection, Overload protection, Shortcircuit protection, Current leakage protection, Grounding protection, Surge protection, Overtemperature protection			
Theft protection	Support theft protection with a padlock			
Integral earth leakage protection	Integrated current failure monitoring (30 mA AC & 6 mA DC)			
Cable protection ^①	Cable lock (APP control)			
Relay protection	Relay weld detection			
Built-in PEN fault technology	According to BS 7671:2018 requirements ^②			
Standards	IEC 61851-1:2017, IEC 62196-2:2016			

① Only for socket type
② Only for chargers sold in the UK region



Fast DC Charger



High Efficiency

- Intelligently distribute charging power to meet the charging needs of different EVs.
- Support EMS intelligent dynamic power control, and form an integrated PV-ESS-EV Solution.



Assured Safety

- Safe and reliable, with multiple fault protection.
- Equipped with cable management system to enhance user experience.



Intelligent Design

- Support OCPP1.6J protocol to access third-party operation platform.
- Support multiple network communication (Ethernet / Wi-Fi / 4G).
- Integrated smart HMI: 12.1-inch high-contrast LCD.



Flexible Adaptability

- All-in-one design, easy and quick installation, compact and lightweight structure can be flexibly installed in various positions.
- The voltage range of 200-1000V is suitable for all current mainstream charging scenarios.

	FDC-120	FDC-180	FDC-240	FDC-300	FDC-360
AC NOMINAL INPUT					
Earthing system	TN-S / TT				
Voltage	400V ± 15%				
Current	185 A	277 A	369 A	461 A	553 A
Frequency	50 / 60Hz				
DC NOMINAL OUTPUT					
Voltage	200 V ~ 1000 V				
Current	Max.250 A (350 A optional)				
Power	120 kW	180 kW	240 kW	300 kW	360 kW
BASIC ATTRIBUTES					
Charge connector	Dual (CCS2 + CCS2)				
Cable length	5m (Including length of the charging connector)*				
Enclosure	Galvanized steel				
Installation method	Floor mounted				
INTERFACE & COMMUNICATION					
HMI	12.1-inch touch screen with shell				
Language	English (standard) other languages available by firmware upgrade				
Authentication	QR code / RFID card /Password login				
DC meter	CE certified DC meter standard equipped (MID meter optional)				
POS terminal	Optional				
Cable management system	Yes				
Communication interface	Ethernet / 4G / Wi-Fi				
Protocol	OCPP 1.6 J				
ELECTRICAL PARAMETER					
Efficiency	≥ 95% @Nominal output power				
Power factor	≥ 0.99 (50% load above)				
THDi	< 5%				
Standby self-consumption	≤100 W				
Ripple factor	≤ ±5%				
SAFETY					
RCD	Type A				
Emergency stop	Yes				
Enclosure ratings	IP54				
Impact protection	IK10 for shell, IK08 for screen				
Electrical protection	Over current, Under voltage, Residual current, Surge protection, Leakage protection, Short circuit, Over temperature, etc				
EVSE-vehicle protocol	DIN SPEC 70121,ISO 15118				
Certifications	CE / CB				
Certifications standard	IEC61851 2017, IEC 62196-1,IEC 62196-3, etc				
OPERATION ENVIRONMENT					
Cooling method	Air-cooling				
Noise	≤ 65 dB (A) @ 1 m / 25 °C				
Operation temperature	-25 ~55°C (Derating above ambient temperature 55°C)				
Working humidity	5 % ~ 95 % without condensation				
Working altitude	≤ 2000 m				
GENERAL					
Weight	400 kg	480 kg	530 kg	570 kg	610 kg
Dimensions (W × H × D)	750 × 2000 × 600 mm	750 × 2000 × 600 mm	830 × 2050 × 740 mm	830 × 2050 × 740 mm	830 × 2050 × 740 mm

*The cable length can be customized.



SMART SOLAR ENERGY SOLUTIONS
Heat Pump

Air to Water Heat Pump



Solax Thermal R290 Series

High Performance

- Integrated with PV and ESS to maximize green energy self-consumption
- SCOP level: A+++
- Maximum leaving water temperature of 80°C

Flexibility

- Available in 5 capacity sizes (8 to 16 kW), suitable for renovations and large new buildings
- Highly interoperable, SG ready, Modbus TCP/RTU supported
- Heating + Cooling + Domestic Hot Water (DHW)

Eco-Friendly

- R290 natural refrigerant, low GWP and a low-carbon lifestyle
- Extremely quiet operation with low noise level

Intelligent Control

- Smart App control supports remote monitoring, operation, and OTA updates
- Brushless DC motor enables stepless speed regulation

*V1.2 Information may be subject to modification without notice. 650.00090.00

STU1-C08R290 STU1-C10R290 STU1-C12R290 STU1-C14R290 STU1-C16R290 STU3-C08R290 STU3-C10R290 STU3-C12R290 STU3-C14R290 STU3-C16R290

Power supply		220 ~ 240 V / 1N~ / 50 Hz					380 ~ 415 V / 3N~ / 50 Hz				
Heating (A: 7/6°CW: 30/35°C)	Capacity	8.5 kW	10 kW	12.5 kW	14 kW	15.5 kW	8.5 kW	10 kW	12.5 kW	14 kW	15.5 kW
	Rated input power	1.65 kW	2.02 kW	2.55 kW	2.95 kW	3.41 kW	1.65 kW	2.02 kW	2.55 kW	2.95 kW	3.41 kW
	COP	5.15	4.95	4.90	4.75	4.55	5.15	4.95	4.90	4.75	4.55
Heating (A: 7/6°CW: 47/55°C)	Capacity	8kW	10 kW	12 kW	14 kW	16 kW	8 kW	10 kW	12 kW	14 kW	16 kW
	Rated input power	2.32 kW	3.08 kW	3.69 kW	4.44 kW	5.16 kW	2.32 kW	3.08 kW	3.69 kW	4.44 kW	5.16 kW
	COP	3.45	3.25	3.25	3.15	3.1	3.45	3.25	3.25	3.15	3.1
Cooling (A: 35°CW: 23/18°C)	Capacity	8.5 kW	10 kW	12 kW	14 kW	15.5 kW	8.5 kW	10 kW	12 kW	14 kW	15.5 kW
	Rated input power	1.63	2.13 kW	2.55 kW	3.11 kW	3.56 kW	1.63 kW	2.13 kW	2.55 kW	3.11 kW	3.56 kW
	EER	5.20	4.70	4.70	4.50	4.35	5.20	4.70	4.70	4.50	4.35
Cooling (A: 35°CW: 12/7°C)	Capacity	8 kW	9kW	12 kW	13 kW	14 kW	8 kW	9 kW	12 kW	13 kW	14 kW
	Rated input power	2.35 kW	2.81 kW	3.87 kW	4.26 kW	5.09 kW	2.35 kW	2.81 kW	3.87 kW	4.26 kW	5.09 kW
	EER	3.40	3.20	3.10	3.05	2.75	3.40	3.20	3.10	3.05	2.75
Seasonal space heating energy efficiency class ^①	LWT at 35°C	A+++	A+++	A+++	A+++	A+++	A+++	A+++	A+++	A+++	A+++
	LWT at 55°C	A+++	A+++	A+++	A+++	A+++	A+++	A+++	A+++	A+++	A+++
SCOP ^②	LWT at 35°C	5.44	5.30	5.07	4.94	4.90	5.44	5.30	5.07	4.94	4.90
	LWT at 55°C	4.12	4.07	3.89	3.84	3.83	4.12	4.07	3.89	3.84	3.83
Compressor	Type	Rotary DC inverter									
Outdoor fan	Motor type	Brushless DC motor									
	Number of fans	1									
Throttle type		Electronic expansion valve									
Air side heat exchanger	Type	Finned tube									
Water side heat exchanger	Type	Plate type									
Refrigerant	Type/GWP	R290/3									
	Charged volume	1.2 kg	1.2 kg	1.5 kg	1.5 kg	1.5 kg	1.2 kg	1.2 kg	1.5 kg	1.5 kg	1.5 kg
CO2 Equivalent		0.0036 t	0.0036 t	0.0045 t	0.0045 t	0.0045 t	0.0036 t	0.0036 t	0.0045 t	0.0045 t	0.0045 t
Sound power level ^③		49 dB(A)	49 dB(A)	51 dB(A)	52 dB(A)	52 dB(A)	49 dB(A)	49 dB(A)	51 dB(A)	52 dB(A)	52 dB(A)
Sound pressure level at 1m ^④		35 dB(A)	35 dB(A)	37 dB(A)	38 dB(A)	38 dB(A)	35 dB(A)	35 dB(A)	37 dB(A)	38 dB(A)	38 dB(A)
Sound pressure level at 3m ^⑤		32 dB(A)	32 dB(A)	34 dB(A)	35 dB(A)	35 dB(A)	32 dB(A)	32 dB(A)	34 dB(A)	35 dB(A)	35 dB(A)
Dimensions(W x H x D)		1310 x 1050 x 465 mm									
Weight		140kg	140kg	154kg	154kg	154kg	151kg	151kg	165kg	165kg	165kg
Piping connection		G 1-1/4"									
Operation range	Heating	-25 ~ 35 °C									
	Cooling	5 ~ 48 °C									
	DHW	-25 ~ 46 °C									
Water outlet	Heating	25~80 °C									
	Cooling	5~25 °C									
	DHW	25~70 °C									

① Relevant EU standards and legislation: EN14511; EN14825; EN50564; EN12102; (EU) No 811/2013; (EU) No 813/2013; OJ 2014/C 207/02

② Seasonal space heating energy efficiency class tests in average climate conditions

③ Sound power level test condition: EN12102-1

④ Sound pressure level at 1m is the maximum value tested under the condition of A7W55

⑤ Sound pressure level at 3m is the maximum value tested under the condition of A7W55

Indoor Unit



STN1-C01



STN1/3-C02



STN1/3-C03

Component	Control Unit	Hydraulic Unit	Hydraulic Integrated Unit
Indoor unit control board	●	●	●
4 inch touch panel	●	●	●
Back up heater		●	●
Expansion tank (8L)		●	●
Solenoid three way valve		●	●
190L hot water tank			●
Hot water tank expansion tank (18L)			●
Hot water tank circulation pump			●
Check valve			●
Application Scenario	Suitable for households with existing or self-installed hydraulic circuits and domestic hot water tanks.	Suitable for households with existing or self-installed domestic hot water tanks	Ideal for new installations or households requiring an upgrade in domestic hot water tank capacity

Control Unit	STN1-C01
Power Supply	220 ~ 240 V / 1N~ / 50 Hz
Rated Current	0.1 A
User Interface	4 inch high-resolution touch panel
Communication	WiFi/Ethernet/RS485
Installation	Wall mounting
Sound power level ^①	30 dB(A)
Sound pressure level ^②	16 dB(A)
Dimensions(W x H x D)	340 x 400 x 80 mm
Weight	6.5 kg

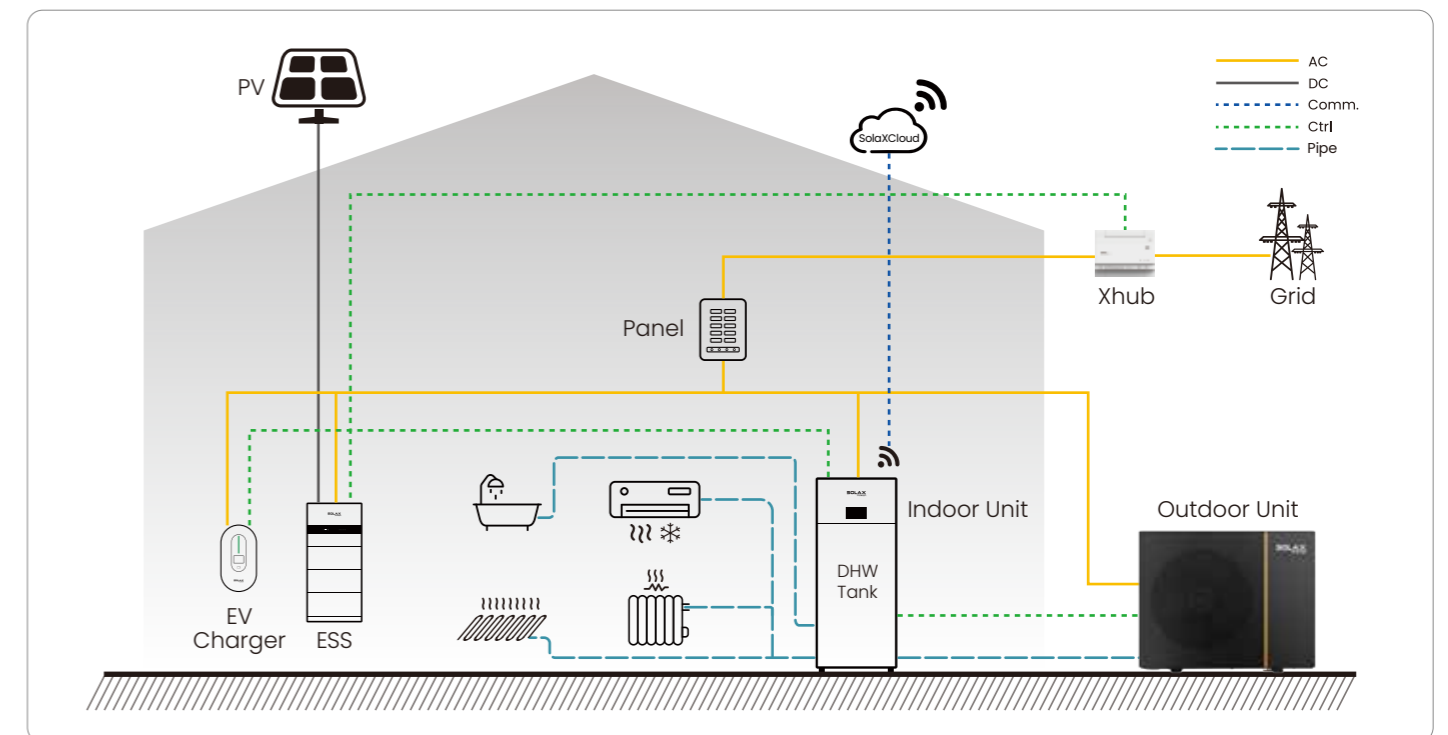
Hydraulic Unit	STN1-C02	STN3-C02
Power Supply	220~240 V / 1N~ / 50 Hz	380 ~ 415 V / 3N~ / 50 Hz
Rated Current	39.5 A	13.5 A
User Interface	4 inch high-resolution touch panel	
Communication	WiFi / Ethernet / RS485	
Back up heater	Capacity combination	3.0 kW + 6.0 kW
	Power supply	220~240 V / 1N~ / 50 Hz
	Rated running current	39.5 A
Expansion tank size ^③	8L	
Piping connections (water) ^④	(G1") / (G1-1/4")	
Recommend circuit breaker	60 A	20 A
Installation	Wall mounting	
Sound power level ^①	33 dB(A)	
Sound pressure level ^②	19 dB(A)	
Dimensions(WxHxD)	420 x 700 x 265 mm	
Weight(Empty)	33 kg	

① Sound power level test condition: EN12102-1
 ② Sound pressure level is tested under the condition of A7W55
 ③ The 18L expansion tank is for the DHW, while the 8L one is for the floor heating side
 ④ G1 connects to indoor water pipe, G1-1/4 connects to outdoor unit water outlet&inlet

Hydraulic Integrated Unit	STN1-C03	STN3-C03
Power Supply	220 ~ 240 V / 1N~ / 50 Hz	380 ~ 415 V / 3N~ / 50 Hz
Rated Current	52.3 A	17.5 A
User Interface	4 inch high-resolution touch panel	
Communication	WiFi / Ethernet / RS485	
Back up heater	Capacity combination	3.0 kW + 6.0 kW
	Power supply	220~240 V / 1N~ / 50 Hz
	Rated running current	39.5 A
Expansion tank size ^④	18 L+8 L	
DHW tank size	190 L	
Piping connections (water) ^③	(G1") / (G1-1/4")	
Recommend circuit breaker	80 A	25 A
Installation	Floor stand	
Sound power level ^①	33 dB(A)	
Sound pressure level ^②	19 dB(A)	
Dimensions(W x H x D)	595 x 1875 x 700 mm	
Weight(empty)	186 kg	

① Sound power level test condition: EN12102-1
 ② Sound pressure level is tested under the condition of A7W55
 ③ The 18L expansion tank is for the DHW, while the 8L one is for the floor heating side
 ④ G1 connects to indoor water pipe, G1-1/4 connects to outdoor unit water outlet&inlet

Solution Diagram



Accessories



Adapter Box G3

Smart Load Manager

Adapter Box G3	
Model	Adapter Box G3
Electrical Parameter	
Power input	12 Vdc, 0.25 A
Power consumption	3 W
Interface	
Communication	3 x RS485
Network connection	WiFi 2.4 GHz / Ethernet 10M
Digital input	4 x DI, 12 V
Digital output	4 x DO, 0 ~ 24 V
Analog output	2 x AO, 0 ~ 10 V
DC output	12 V, 30 mA
HMI interface	LED / APP / Rest button
General Parameters	
Dimensions (L x W x H)	83 mm x 100 mm x 65 mm
Weight	0.2 kg
Operating temperature range	-20 ~ 50°C
Degree of protection	IP20
Installation method	DIN-rail
STANDARD	
Certification	CE LVD, CE EMC, RED, RoHs

High Efficiency

- Multiple load management & balance (heat pump, EV charger, immersion heater...)
- Load consumption monitoring

Flexibility

- Support external control
- Multiple control signal (direct / indirect)

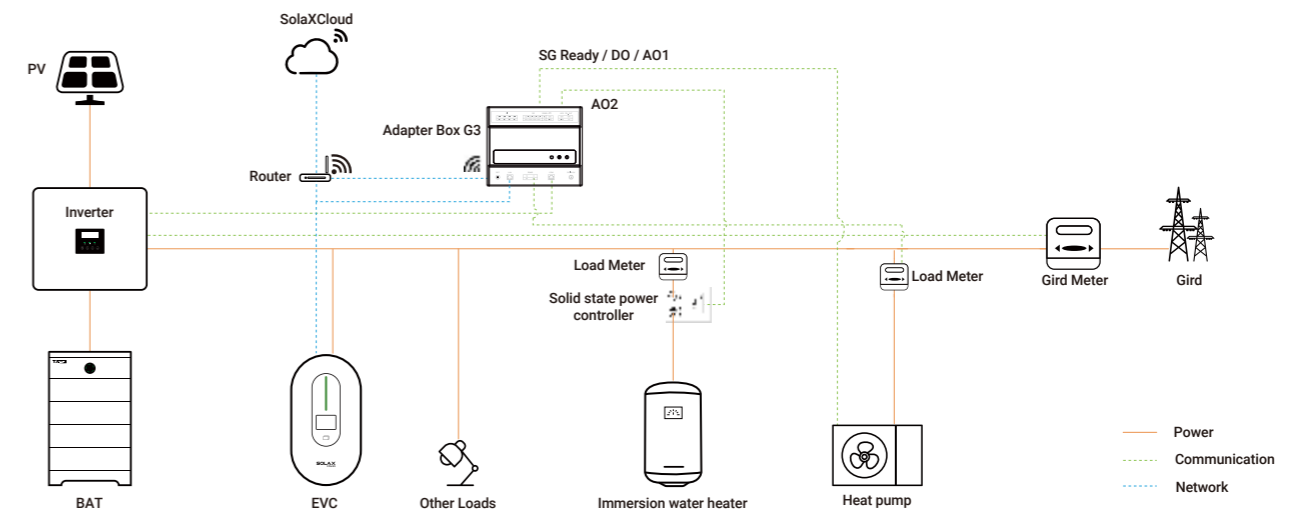
Intelligent

- PV smart distribution
- Multiple work mode
- Smart APP control and OTA upgrade

User-Friendly

- Easy to install with DIN rail design
- WiFi & LAN network connection

Application Diagram



*V1.0. Information may be subject to modify without notice. 650.00094.00



=====
SUCCESS STORIES

SUCCESS STORIES ▶ Selected Global Cases



[View More](#)

Belgium X1-Micro



SUCCESS STORIES ▶ Selected Global Cases



[View More](#)

Belgium X1-Micro



SUCCESS STORIES ▶ Selected Global Cases



View More

📍 India 🏠 3.3kW 📺 X1-MINI G4



📍 Australia 🏠 8kW 📺 X1 Smart G2



SUCCESS STORIES ▶ Selected Global Cases



View More

📍 Sri Lanka 🏠 5kW 📺 X1-BOOST G4



📍 Indonesia 🏠 23.5kW 📺 X3-PRO G2



SUCCESS STORIES ▶ Selected Global Cases



View More

📍 Italy ⚡ 360kW 📦 X3-MEGA G2 60kW



📍 Spain 📦 X3-FORTH



SUCCESS STORIES ▶ Selected Global Cases



View More

📍 UK ⚡ 110kW 📦 X3-FORTH 110kW



📍 Romania 📦 X3-FORTH



SUCCESS STORIES ▶ Selected Global Cases



View More

📍 China

🏠 196MW

📺 X3-GRAND 320kW



SUCCESS STORIES ▶ Selected Global Cases



View More

📍 China

🏠 120MW

📺 X3-GRAND 320kW

